

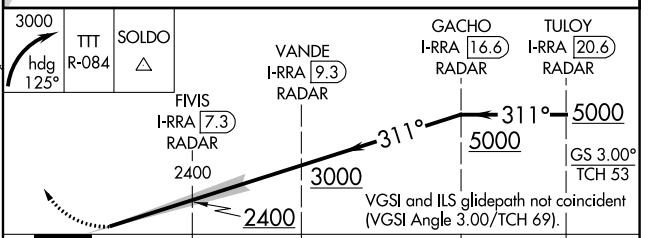
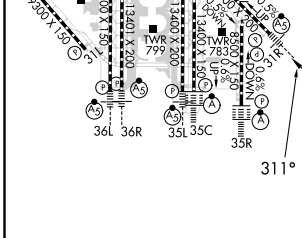
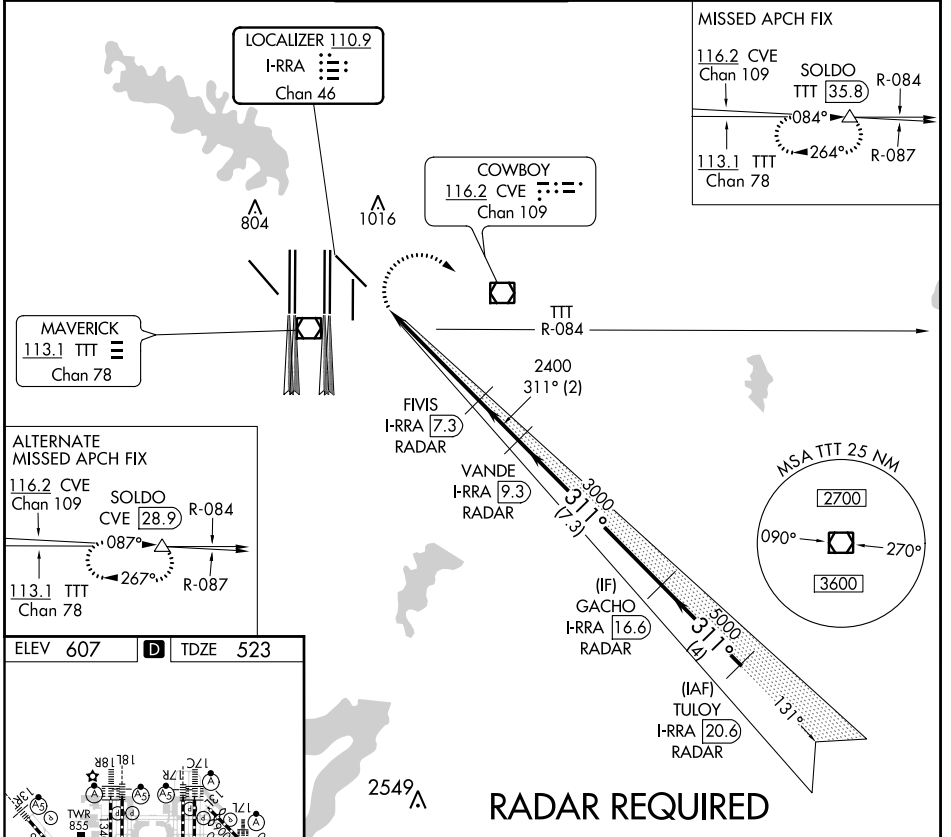
LOC/DME I-RRA 110.9 Chan 46	APP CRS 311°	Rwy Idg TDZE 523 Apt Elev 607
---	------------------------	---

CONVERGING ILS RWY 31R

DALLAS-FORT WORTH INTL (DFW)

⚠ Inop table does not apply. DME required. Simultaneous converging approach authorized with Converging ILS Rwy 35L/C and Converging ILS Rwy 36L/R.	MALSRR 	MISSED APPROACH: Climbing right turn to 3000 on heading 125° and on TTT VOR/DME R-084 to SOLDLO/TTT 35.8 DME and hold.
---	------------	--

D-ATIS ARR 123.775 DEP 135.925	REGIONAL APP CON 135.5 125.2	DFW TOWER 126.55 127.5 EAST 124.15 134.9 WEST	GND CON 121.65 121.8 EAST 121.85 WEST	CLNC DEL 128.25	CPDLC
--	--	---	---	---------------------------	-------



CATEGORY	A	B	C	D
S-ILS 31R	1528-4	1005 (1000-4)	1583-4 1060 (1000-4)	NA

CONVERGING ILS RWY 31R

SC-2, 19 MAY 2022 to 16 JUN 2022

SC-2, 19 MAY 2022 to 16 JUN 2022