

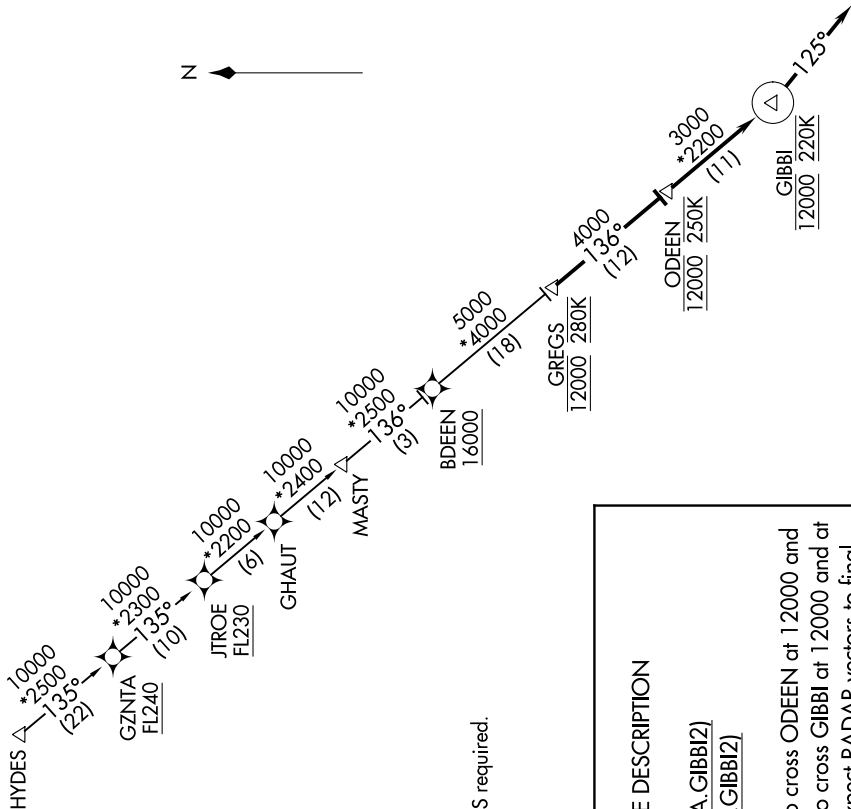
# GIBBI TWO ARRIVAL (RNAV)

DALLAS-FORT WORTH, TEXAS

D-ATIS ARR  
123.775  
REGIONAL APP CON  
119.875 284.65



NOTE: Chart not to scale



SC-2, 19 MAY 2022 to 16 JUN 2022

SC-2, 19 MAY 2022 to 16 JUN 2022

- NOTE: RADAR required.
- NOTE: RNAV 1.
- NOTE: DME/DME/IRU or GPS required.
- NOTE: Turboplet aircraft only.
- NOTE: ATC assigned only.

## ARRIVAL ROUTE DESCRIPTION

GZNTA TRANSITION (GZNTA.GIBBI2)  
HYDES TRANSITION (HYDES.GIBBI2)

From GREGS on track 136° to cross ODEEN at 12000 and at 250K, then on track 136° to cross GIBBI at 12000 and at 220K, then on track 125°. Expect RADAR vectors to final approach course.

# GIBBI TWO ARRIVAL (RNAV)

(GREGS.GIBBI2) 25JUN15

DALLAS-FORT WORTH, TEXAS

DALLAS-FORT WORTH INTL (DFW)