

LOC/DME I-PPZ 111.75 Chan 54 (Y)	APP CRS 176°	Rwy Idg TDZE Apt Elev	8500 545 607
--	------------------------	-----------------------------	---

ILS RWY 17L (CAT II & III)

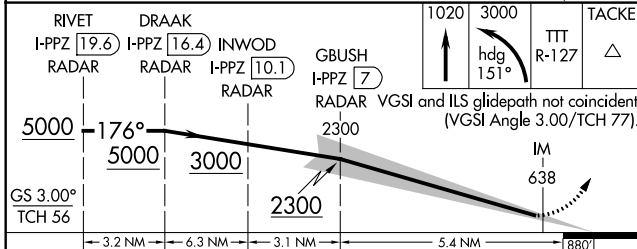
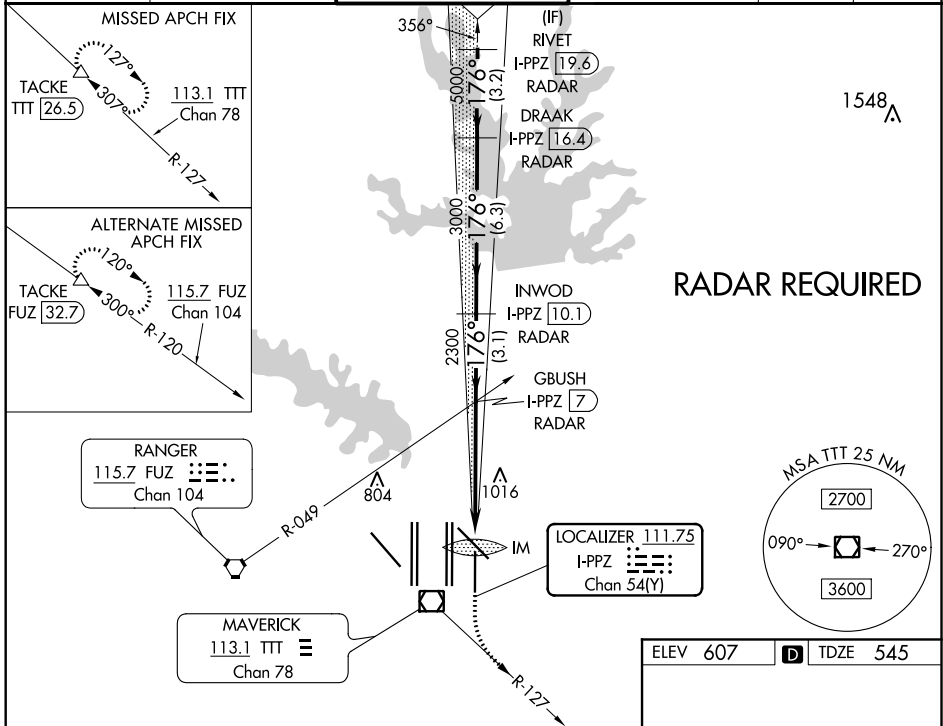
DALLAS-FORT WORTH INTL (DFW)

Simultaneous approach authorized with Rwy 17C/R and Rwy 18L/R. DME required.

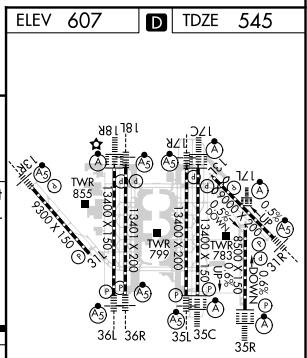
ALSF-2

MISSED APPROACH: Climb to 1020 then climbing left turn to 3000 on heading 151° and TTT VOR/DME R-127 to TACKE/TTT 26.5 DME and hold.

D-ATIS ARR 123.775 DEP 135.925	REGIONAL APP CON 119.4	DFW TOWER 126.55 127.5 EAST 124.15 134.9 WEST	GND CON 121.65 121.8 EAST 121.85 WEST	CLNC DEL 128.25	CPDLC
--	----------------------------------	---	---	---------------------------	-------



CATEGORY	A	B	C	D
S-ILS 17L	CAT II RA 122/12 100 DA 645			
S-ILS 17L	CAT IIIa RVR 07			
S-ILS 17L	CAT IIIb RVR 06			
S-ILS 17L	CAT IIIc NA			



CATEGORY II & III ILS - SPECIAL AIRCREW & AIRCRAFT CERTIFICATION REQUIRED

HIRL all Rwys
REIL Rwys 13L and 31L
TDZ/CL all Rwys except 13L and 31L

SC-2, 19 MAY 2022 to 16 JUN 2022

SC-2, 19 MAY 2022 to 16 JUN 2022