

LOC/DME I-VYIN <b>111.9</b> Chan <b>56</b>	APP CRS <b>176°</b>	Rwy Idg TDZE Apt Elev	<b>13400</b> <b>607</b> <b>607</b>
--	------------------------	-----------------------------	--

# ILS RWY 18R (CAT II & III)

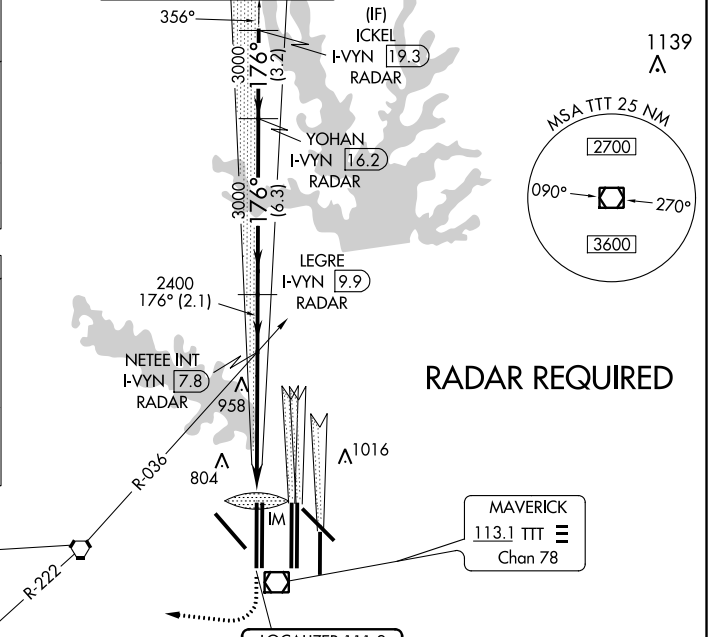
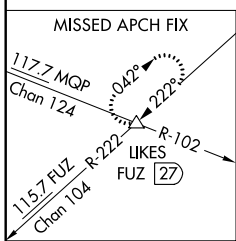
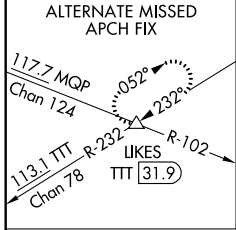
DALLAS-FORT WORTH INTL (DFW)

**▲** DME or RADAR required. Simultaneous approach authorized with Rwy 17 L/C/R.

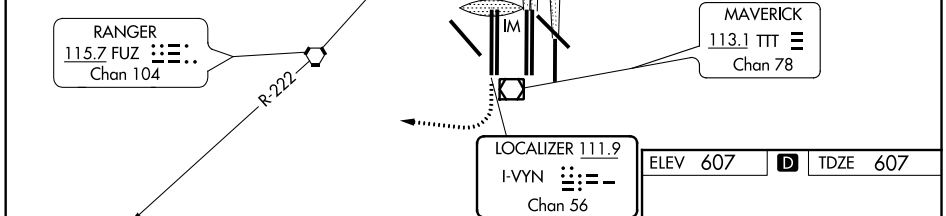
ALSF-2

MISSED APPROACH: Climb to 1100 then climbing right turn to 3000 on heading 250° and FUZ VORTAC R-222 to LIKES INT/FUZ VORTAC 27 DME and hold.

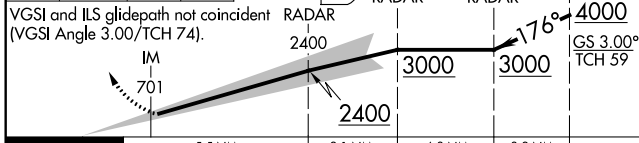
D-ATIS ARR <b>123.775</b> DEP <b>135.925</b>	REGIONAL APP CON <b>118.425</b>	DFW TOWER <b>126.55 127.5 EAST</b> <b>124.15 134.9 WEST</b>	GND CON <b>121.65 121.8 EAST</b> <b>121.85 WEST</b>	CLNC DEL <b>128.25</b>	CPDLC
--	------------------------------------	---	---	---------------------------	-------



**RADAR REQUIRED**

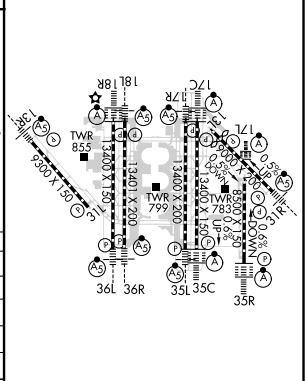


1100	3000	FUZ R-222	LIKES	ICKEL I-VYIN 19.3
↑	hdg 250°			



	1130'	5.5 NM	2.1 NM	6.3 NM	3.2 NM
CATEGORY	A	B	C	D	
S-ILS 18R		CAT II	RA 106/12 100 DA 707		
S-ILS 18R		CAT IIIa	RVR 07		
S-ILS 18R		CAT IIIb	RVR 06		
S-ILS 18R		CAT IIIc	NA		

ELEV 607	<b>D</b>	TDZE 607
----------	----------	----------



## CATEGORY II & III ILS - SPECIAL AIRCREW & AIRCRAFT CERTIFICATION REQUIRED

HIRL all Rwys  
REL Rwy 13L and 31L  
TDZ/CL all Rwy except 13L and 31L

SC-2, 19 MAY 2022 to 16 JUN 2022

SC-2, 19 MAY 2022 to 16 JUN 2022