

LOC/DME I-PKQ 110.3 Chan 40	APP CRS 356°	Rwy Idg TDZE Apt Elev	13400 563 607
--	------------------------	-----------------------------	--

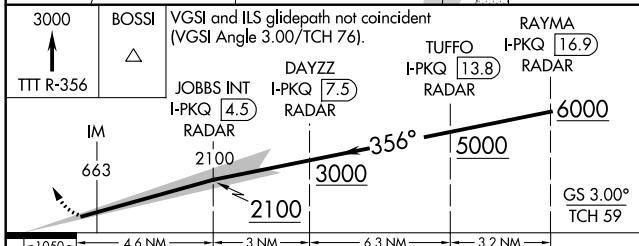
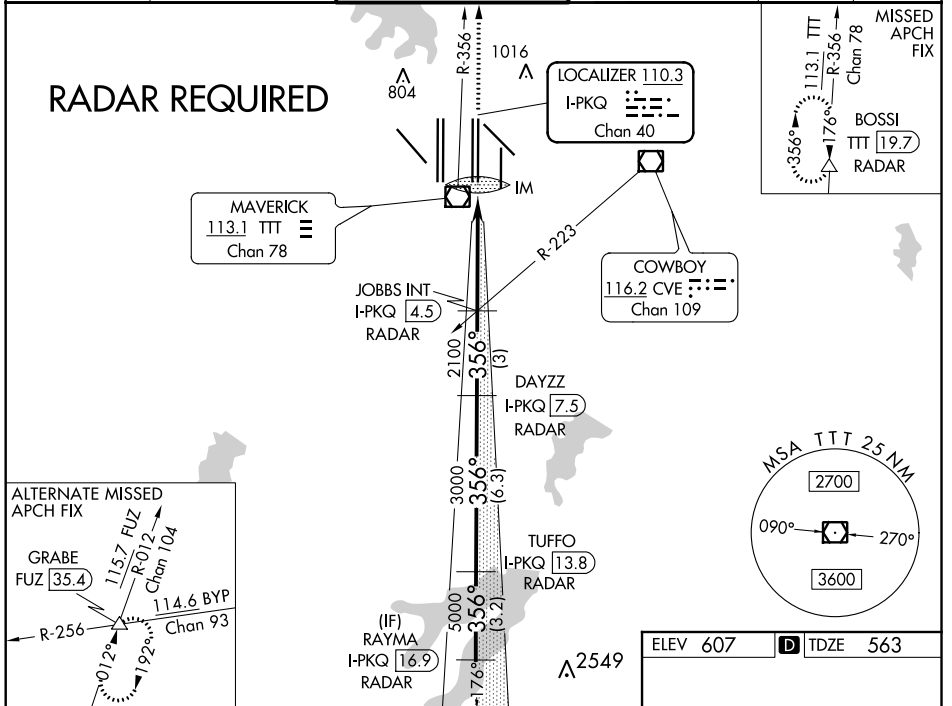
ILS RWY 35C (CAT II & III)

DALLAS-FORT WORTH INTL (DFW)

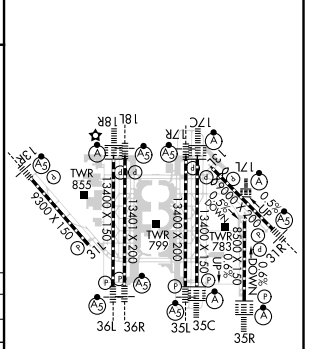
DME or RADAR required.
Simultaneous approach authorized with Rwy 35R, Rwy 36L/R.

ALSF-2
MISSED APPROACH: Climb to 3000 on TTT VOR/DME R-356 to BOSSI/TTT 19.7 DME/RADAR and hold.

D-ATIS ARR 123.775 DEP 135.925	REGIONAL APP CON 127.075	DFW TOWER 126.55 127.5 EAST 124.15 134.9 WEST	GND CON 121.65 121.8 EAST 121.85 WEST	CLNC DEL 128.25	CPDLC
--	------------------------------------	---	---	---------------------------	-------



ELEV 607	D TDZE 563
----------	-------------------



CATEGORY	A	B	C	D
S-ILS 35C	CAT II RA 100/12 100 DA 663			
S-ILS 35C	CAT IIIa RVR 07			
S-ILS 35C	CAT IIIb RVR 06			
S-ILS 35C	CAT IIIc NA			

CATEGORY II & III ILS - SPECIAL AIRCREW & AIRCRAFT CERTIFICATION REQUIRED

HIRL all Rwys
REIL Rwys 13L and 31L
TDZ/CL all Rwys except 13L and 31L

SC-2, 19 MAY 2022 to 16 JUN 2022

SC-2, 19 MAY 2022 to 16 JUN 2022