

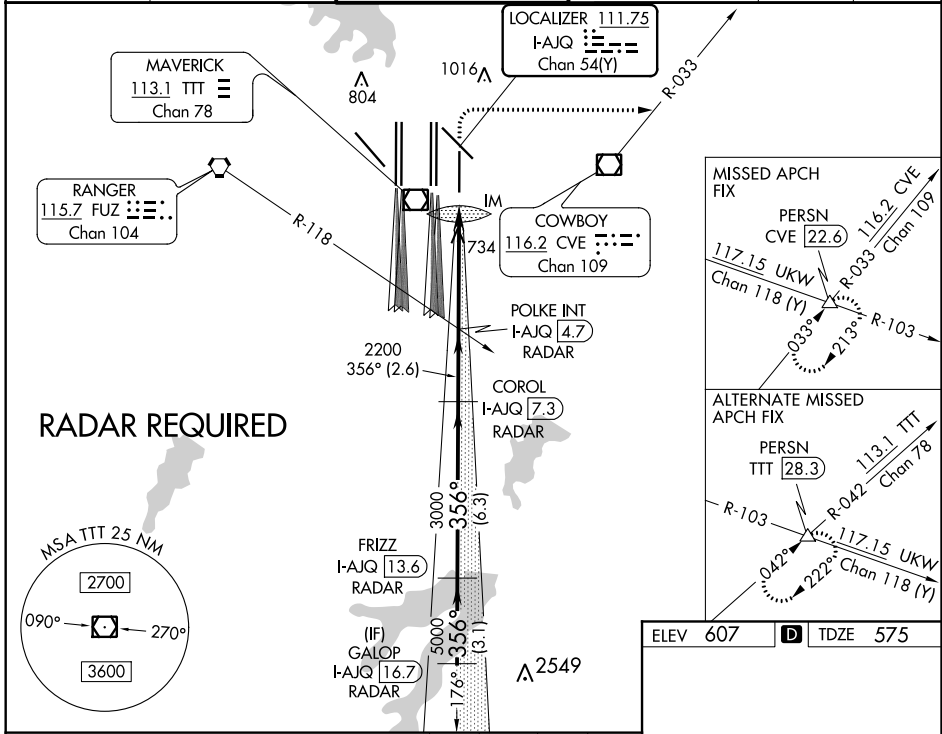
LOC/DME I-AJQ <b>111.75</b> Chan 54(Y)	APP CRS <b>356°</b>	Rwy Idg TDZE Apt Elev <b>8500</b> <b>575</b> <b>607</b>
--	------------------------	--

# ILS RWY 35R (CAT II & III)

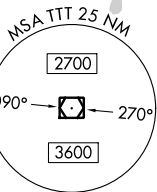
DALLAS-FORT WORTH INTL (DFW)

Simultaneous approach authorized with Rwy 36L/R and Rwy 35L/C. DME required.	ALSIF-2	MISSED APPROACH: Climb to 1040 then climbing right turn to 3000 on heading 090° and CVE VOR/DME R-033 to PERSN/CVE 22.6 DME and hold.

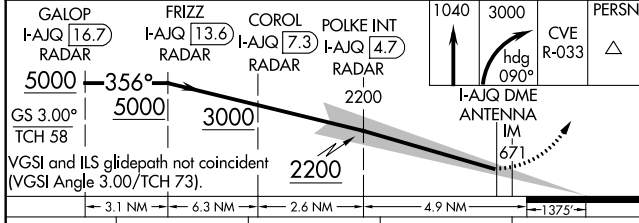
D-ATIS ARR <b>123.775</b> DEP <b>135.925</b>	REGIONAL APP CON <b>119.4</b>	DFW TOWER <b>126.55 127.5</b> EAST <b>124.15 134.9</b> WEST	GND CON <b>121.65 121.8</b> EAST <b>121.85</b> WEST	CLNC DEL <b>128.25</b>	CPDLC
--	----------------------------------	---	---	---------------------------	-------



**RADAR REQUIRED**

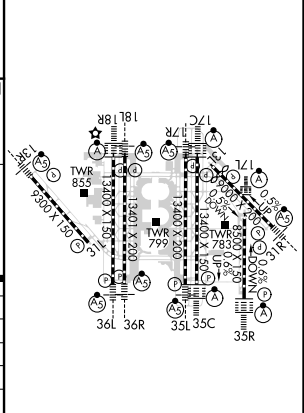


ELEV 607	<b>D</b> TDZE 575
----------	-------------------



CATEGORY	A	B	C	D
S-ILS 35R		CAT II RA 94/12	100 DA 675	
S-ILS 35R		CAT IIIa RVR 07		
S-ILS 35R		CAT IIIb RVR 06		
S-ILS 35R		CAT IIIc NA		

## CATEGORY II & III ILS - SPECIAL AIRCREW & AIRCRAFT CERTIFICATION REQUIRED



HIRL all Rwys  
REIL Rwys 13L and 31L  
TDZ/CL all Rwys except 13L, and 31L

SC-2, 19 MAY 2022 to 16 JUN 2022

SC-2, 19 MAY 2022 to 16 JUN 2022