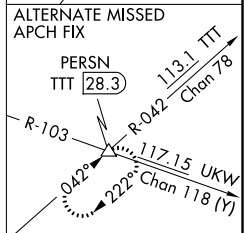
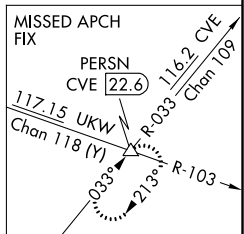
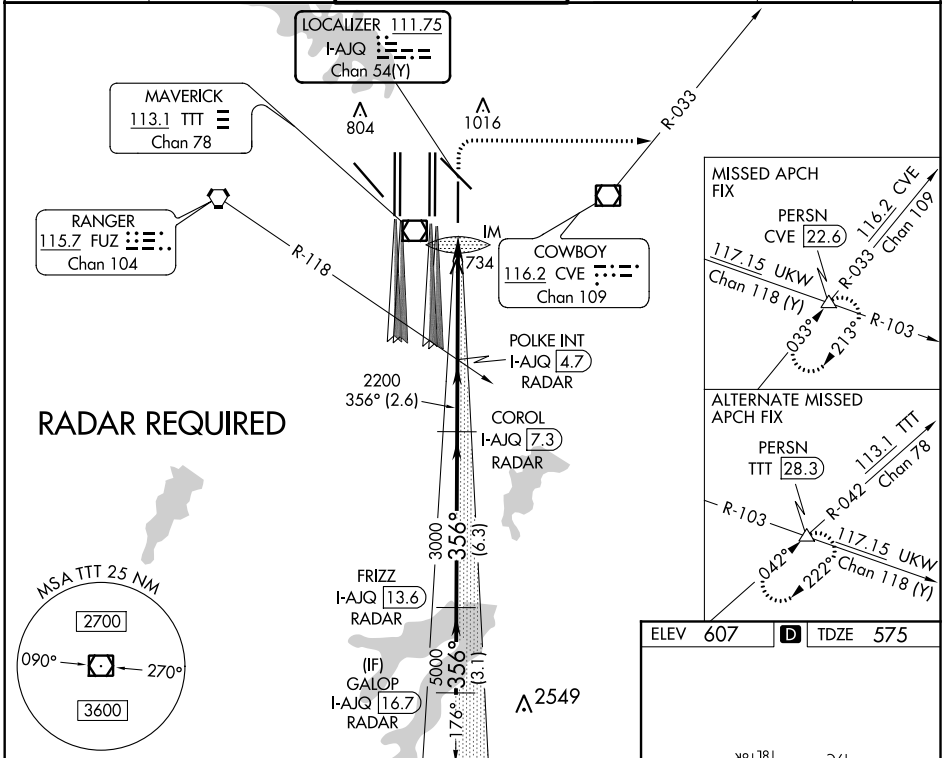


LOC/DME I-AJQ <b>111.75</b> Chan <b>54(Y)</b>	APP CRS <b>356°</b>	Rwy Idg <b>8500</b> TDZE <b>575</b> Apt Elev <b>607</b>
---	------------------------	---

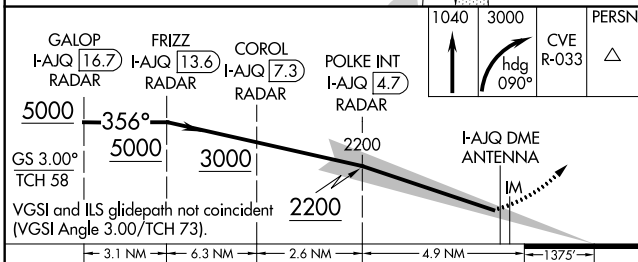
# ILS RWY 35R (SA CAT I)

DALLAS-FORT WORTH INTL (DFW)

V Simultaneous approach authorized with Rwy 36L/R and Rwy 35L/C. DME required. Requires specific OPSPEC, MSPEC, or LOA approval and use of HUD to DH.		ALSF-2	MISSED APPROACH: Climb to 1040 then climbing right turn to 3000 on heading 090° and CVE VOR/DME R-033 to PERSN/CVE 22.6 DME and hold.		
D-ATIS ARR <b>123.775</b> DEP <b>135.925</b>	REGIONAL APP CON <b>119.4</b>	DFW TOWER <b>126.55 127.5</b> EAST <b>124.15 134.9</b> WEST	GND CON <b>121.65 121.8</b> EAST <b>121.85</b> WEST	CLNC DEL <b>128.25</b>	CPDLC

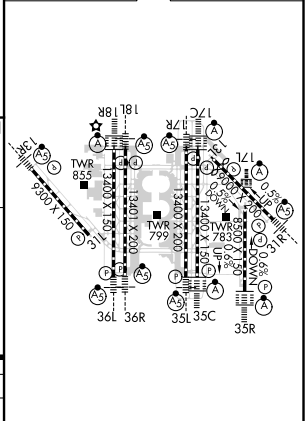


ELEV 607	D	TDZE 575
----------	---	----------



GS 3.00° TCH 58	3.1 NM	6.3 NM	2.6 NM	4.9 NM	1373'
-----------------	--------	--------	--------	--------	-------

CATEGORY	A	B	C	D
S-ILS 35R	RA 144/14 150 DA 725			



HIRL all Rwys  
REIL Rwys 13L and 31L  
TDZ/CL all Rwys except 13L, and 31L

SC-2, 19 MAY 2022 to 16 JUN 2022

SC-2, 19 MAY 2022 to 16 JUN 2022