

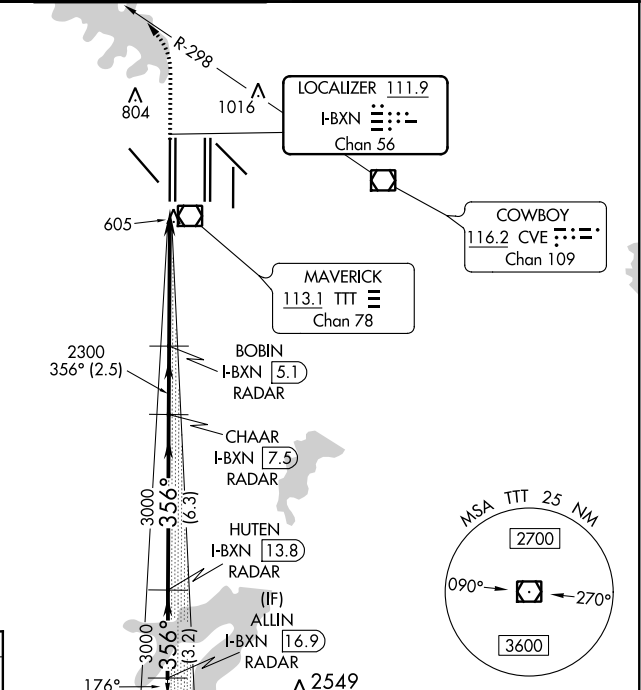
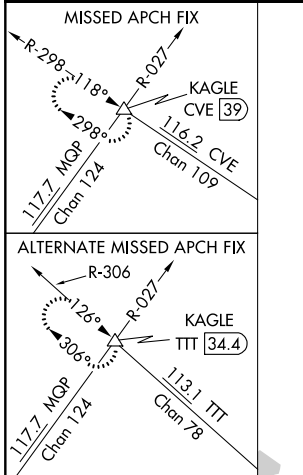
LOC/DME I-BXN <b>111.9</b> Chan <b>56</b>	APP CRS <b>356°</b>	Rwy Idg TDZE Apt Elev	<b>13400</b> <b>588</b> <b>607</b>
---	------------------------	-----------------------------	--

# ILS RWY 36L (SA CAT II)

DALLAS-FORT WORTH INTL (DFW)

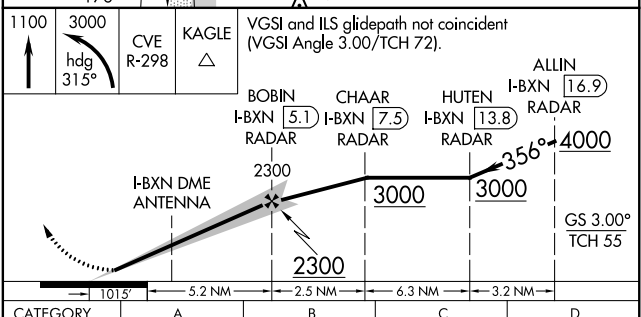
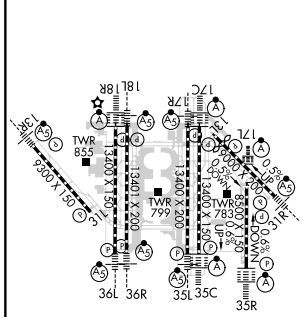
<p>▼ DME or RADAR required. Reduced Lighting: Requires specific OPSPEC, MSPEC, or LOA approval and use of autoland or HUD to touchdown.</p>	<p>MALSR</p>	<p>MISSED APPROACH: Climb to 1100 then climbing left turn to 3000 on heading 315° and CVE VOR/DME R-298 to KAGLE INT/ CVE VOR/DME 39 DME and hold.</p>
---	--------------	--

D-ATIS ARR <b>123.775</b> DEP <b>135.925</b>	REGIONAL APP CON <b>118.425</b>	DFW TOWER <b>126.55 127.5 EAST</b> <b>124.15 134.9 WEST</b>	GND CON <b>121.65 121.8 EAST</b> <b>121.85 WEST</b>	CLNC DEL <b>128.25</b>	CPDLC
--	------------------------------------	---	---	---------------------------	-------



**RADAR REQUIRED**

ELEV 607	<b>D</b>	TDZE 588
----------	----------	----------



CATEGORY	A	B	C	D
S-ILS 36L	RA 107/12 100 DA 688			

**SA CATEGORY II - ILS SPECIAL AIRCREW & AIRCRAFT CERTIFICATION REQUIRED**

SC-2, 19 MAY 2022 to 16 JUN 2022

SC-2, 19 MAY 2022 to 16 JUN 2022