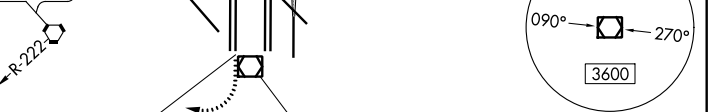
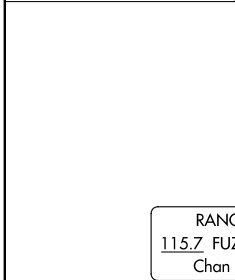
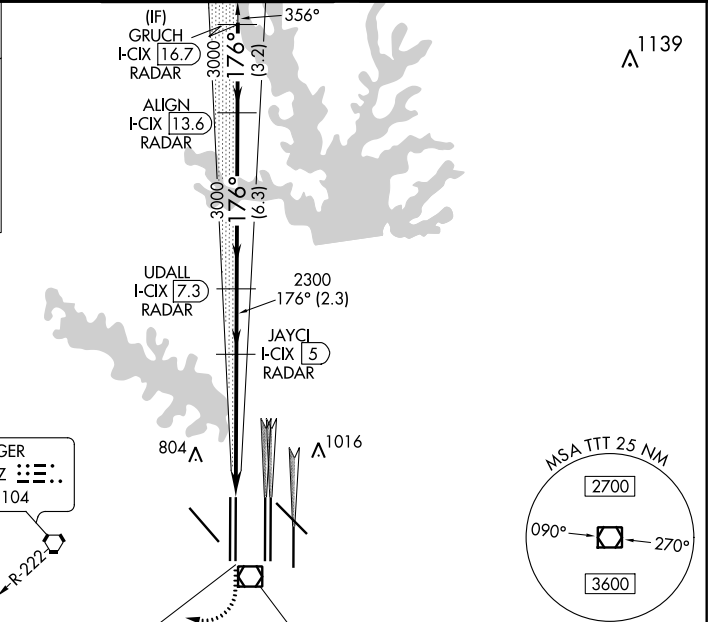
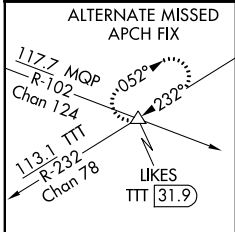


LOC/DME I-CIX 110.55 Chan 42 (Y)	APP CRS 176°	Rwy Idg 18L 13401 18R 13400
		TDZE 602 606
		Apt Elev 606 606

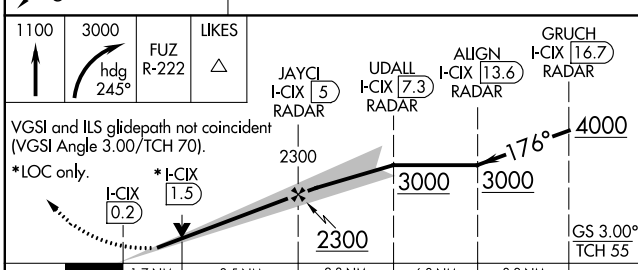
ILS or LOC RWY 18L

DALLAS-FORT WORTH INTL (DFW)

RADAR required for procedure entry. DME or RADAR required. Simultaneous approach authorized with Rwy 17L/C/R. For inop ALS, increase S-LOC 18L Cat C/D and Sidestep 18R Cat C/D visibility to 1 1/4 mile. Inop table does not apply to Sidestep 18R Cats A and B.		Rwy 18L MALSR	Rwy 18R ALS-F-2	MISSED APPROACH: Climb to 1100, then climbing right turn to 3000 on heading 245° and FUZE VORTAC R-222 to LIKES INT/FUZZ 27 DME and hold.
D-ATIS ARR 123.775 DEP 135.925	REGIONAL APP CON 118.425	DFW TOWER 126.55 127.5 EAST 124.15 134.9 WEST		GND CON 121.65 121.8 EAST 121.85 WEST
			CLNC DEL 128.25	CPDLC



1100	3000	FUZZ R-222	LIKES
↑	hdg 245°	△	



CATEGORY	A	B	C	D
S-ILS 18L	802/18 200 (200-1/2)			
S-LOC 18L	1220/24 618 (700-1/2)	1220-1 3/8 618 (700-1 3/8)		
SIDESTEP 18R	1220/50 614 (700-1)	1220-1 3/8 614 (700-1 3/8)	1220-1 1/2 614 (700-1 1/2)	

ELEV 606

TDZE 602 18L
TDZE 606 18R

176° 5.2 NM from FAF

FAF to MAP 5.2 NM

Knots	60	90	120	150	180
Min:Sec	5:12	3:28	2:36	2:05	1:44

SC-2, 19 MAY 2022 to 16 JUN 2022

SC-2, 19 MAY 2022 to 16 JUN 2022