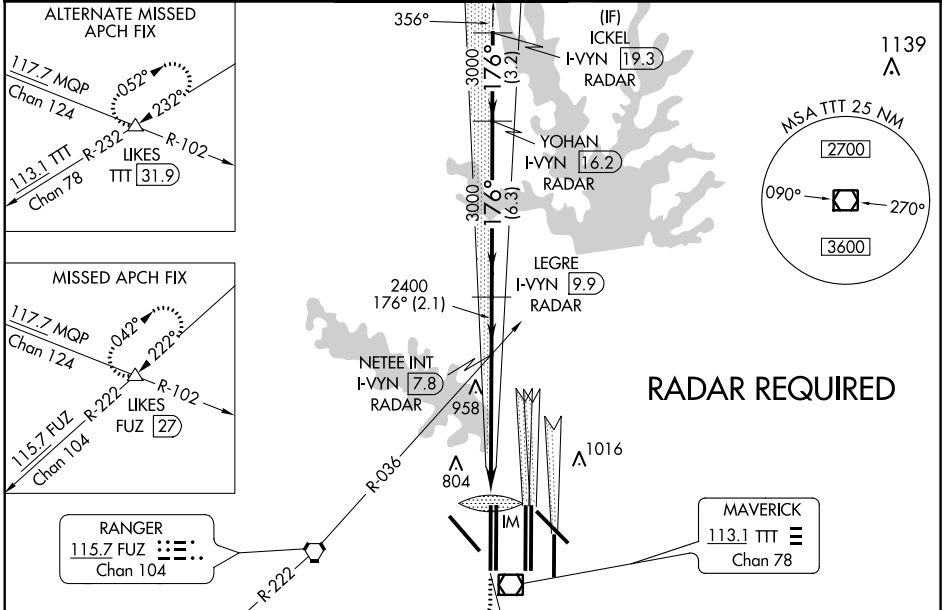


LOC/DME I-VYIN 111.9 Chan 56	APP CRS 176°	Rwy Idg 18R 18L	13400 13401
		TDZE	607 602
		Apt Elev	607 607

ILS or LOC RWY 18R

DALLAS-FORT WORTH INTL (DFW)

<p>▼ Inop table does not apply to Sidestep 18L Cats A and B. DME or RADAR required. Simultaneous approach authorized with Rwy 17 L/C/R. For inop ALSF/MALSR, increase S-LOC 18R Cat C/D and Sidestep 18L Cat C visibility to 1¼ mile.</p>		Rwy 18R ALSF-2	Rwy 18L MALSR	MISSED APPROACH: Climb to 1100 then climbing right turn to 3000 on heading 250° and FUZ VORTAC R-222 to LIKES INT/FUZ VORTAC 27 DME and hold.	
D-ATIS ARR 123.775 DEP 135.925	REGIONAL APP CON 118.425	DFW TOWER 126.55 127.5 EAST 124.15 134.9 WEST	GND CON 121.65 121.8 EAST 121.85 WEST	CLNC DEL 128.25	CPDLC



RADAR REQUIRED

1100	3000	FUZ R-222	LIKES	VGSI and ILS glidepath not coincident (VGSI Angle 3.00/TCH 74).		ICKEL I-VYIN [19.3] RADAR
*LOC only		* I-VYIN [4.1]		NETEE INT I-VYIN [7.8] RADAR	LEGRE I-VYIN [9.9] RADAR	YOHAN I-VYIN [16.2] RADAR
IM		2400		3000		3000
0.1		1.6 NM		3.8 NM		2.1 NM
6.3 NM		3.2 NM		GS 3.00° TCH 59		
CATEGORY	A	B	C	D	ELEV 607 TDZE 18R 607 TDZE 18L 602	
S-ILS 18R	807/18			200 (200-½)	176° 5.5 NM from FAF	
S-LOC 18R	1220/24	613 (700-½)	1220-1⅓	613 (700-1⅓)		
SIDESTEP 18L	1220/50	618 (700-1)	1220-1⅓	618 (700-1⅓)	HIRL all Rwsys REIL Rwsys 13L and 31L TDZ/CL all Rwsys except 13L and 31L FAF to MAP 5.5 NM Knots 60 90 120 150 180 Min:Sec 5:30 3:40 2:45 2:12 1:50	

SC-2, 19 MAY 2022 to 16 JUN 2022

SC-2, 19 MAY 2022 to 16 JUN 2022