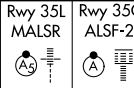


LOC/DME I-UWX 111.35 Chan 50 (Y)	APP CRS 356°	Rwy 35L Idg 13400 TDZE 564 Apt Elev 607	Rwy 35C Idg 13400 TDZE 563 Apt Elev 607
------------------------------------------------------	------------------------	--------------------------------------------------------------------	--------------------------------------------------------------------

ILS or LOC RWY 35L

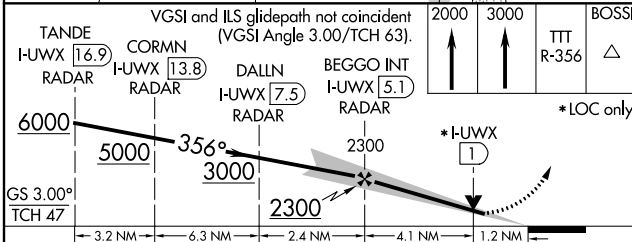
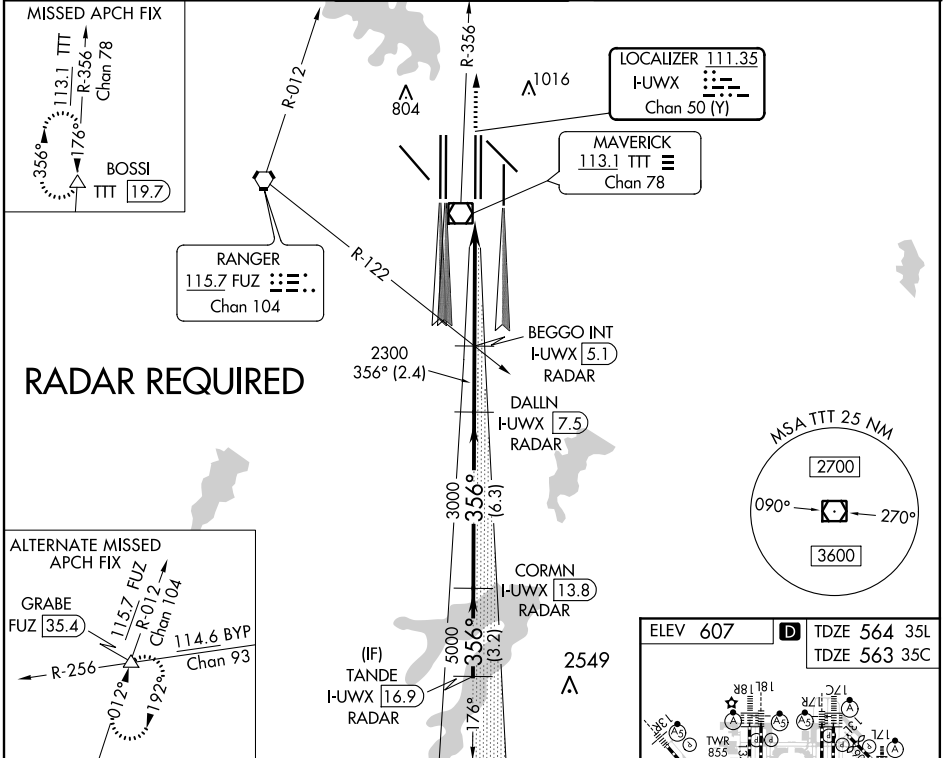
DALLAS-FORT WORTH INTL (DFW)

▼ DME or RADAR required. Simultaneous approach authorized with Rwy 36 L/R and Rwy 35R.
Inop table does not apply to Sidestep Rwy 35C.

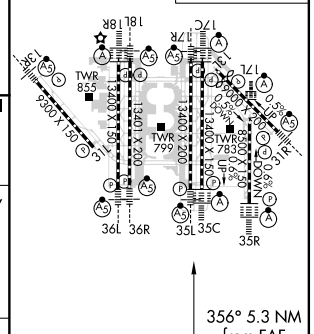


MISSED APPROACH: Climb to 2000 then climb to 3000 on TTT VOR/DME R-356 to BOSSI/TTT 19.7 DME and hold.

D-ATIS ARR 123.775 DEP 135.925	REGIONAL APP CON 127.075	DFW TOWER 126.55 127.5 EAST 124.15 134.9 WEST		GND CON 121.65 121.8 EAST 121.85 WEST	CLNC DEL 128.25	CPDLC
----------------------------------------------------	------------------------------------	-------------------------------------------------------------------	--	-----------------------------------------------------------	---------------------------	-------



ELEV 607	TDZE 564 35L
	TDZE 563 35C



CATEGORY	A	B	C	D
S-ILS 35L	764/18 200 (200-½)			
S-LOC 35L	1000/24	436 (400-½)	1000/40	436 (400-¾)
SIDESTEP 35C	1000-1	437 (400-1)	1000-1½	1000-2
			437 (400-½)	437 (400-2)

HIRL all Rws					
REL Rws 13L and 31L					
TDZ/CL all Rws except 13L, and 31L					
FAF to MAP 5.3 NM					
Knots	60	90	120	150	180
Min:Sec	5:18	3:32	2:39	2:07	1:46

SC-2, 19 MAY 2022 to 16 JUN 2022

SC-2, 19 MAY 2022 to 16 JUN 2022