

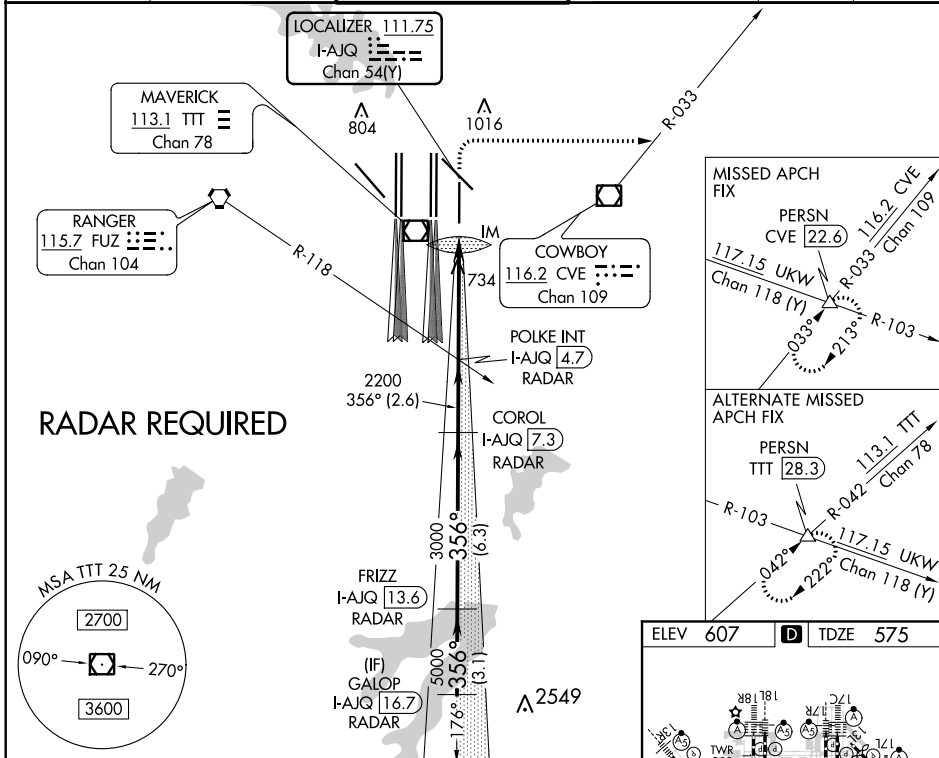
LOC/DME I-AJQ 111.75 Chan 54(Y)	APP CRS 356°	Rwy Idg TDZE Apt Elev 8500 575 607
---	------------------------	--

ILS or LOC RWY 35R

DALLAS-FORT WORTH INTL (DFW)

▼ Simultaneous approach authorized with Rwy 36L/R and Rwy 35L/C. DME required.	ALSF-2	MISSED APPROACH: Climb to 1040 then climbing right turn to 3000 on heading 090° and CVE VOR/DME R-033 to PERSN/CVE 22.6 DME and hold.

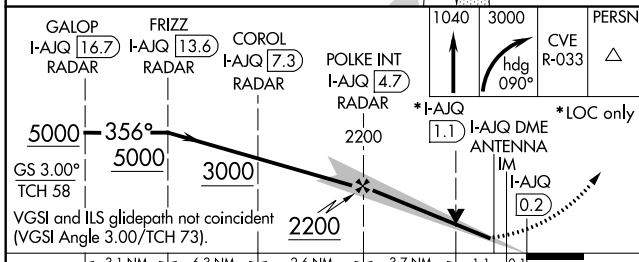
D-ATIS ARR 123.775 DEP 135.925	REGIONAL APP CON 119.4	DFW TOWER 126.55 127.5 EAST 124.15 134.9 WEST	GND CON 121.65 121.8 EAST 121.85 WEST	CLNC DEL 128.25	CPDLC
--	----------------------------------	---	---	---------------------------	-------



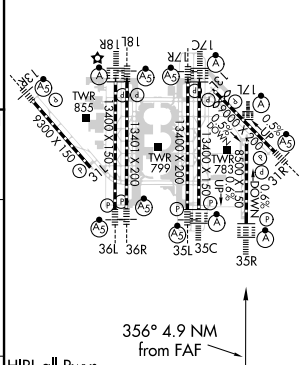
RADAR REQUIRED

SC-2, 19 MAY 2022 to 16 JUN 2022

SC-2, 19 MAY 2022 to 16 JUN 2022



ELEV 607	D TDZE 575
----------	-------------------



CATEGORY	A	B	C	D
S-ILS 35R	775/18 200 (200-½)			
S-LOC 35R	1040/24	465 (500-½)	1040/50	465 (500-1)

HIRL all Rwys				
REIL Rwy 13L and 31L				
TDZ/CL all Rwys except 13L, and 31L				
FAF to MAP 4.9 NM				
Knots	60	90	120	150 180
Min:Sec	4:54	3:16	2:27	1:58 1:38