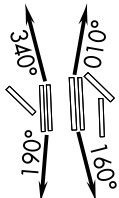


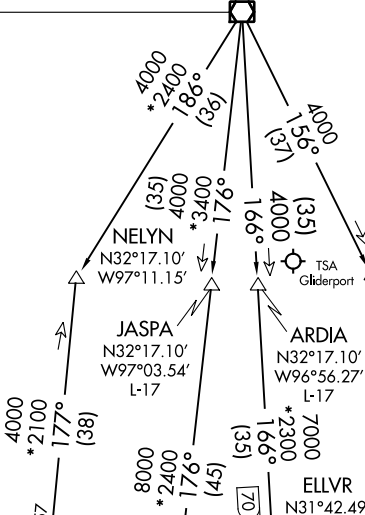
JOE POOL FIVE DEPARTURE

TOP ALTITUDE:
RWYS 13L/R, 17L/C/R, 18L/R,
35L/C/R, 36L/R: 10000
RWYS 31L/R: 5000

D-ATIS DEP 135.925
 CLNC DEL 128.25
 CPDLC
 GND CON
 121.65 121.8 (EAST)
 121.85 (WEST)
 DFW TOWER
 126.55 127.5 (EAST)
 124.15 134.9 (WEST)
 REGIONAL DEP CON
 125.125 353.95 (Rwys 17C/R, 18L/R)
 126.475 363.15 (Rwys 36L/R)
 118.55 290.35 (Rwys 35L/C)



MAVERICK
 113.1 TTT
 Chan 78
 N32°52.15'
 W97°02.43'



WACO
 115.3 ACT
 Chan 100
 N31°39.73'
 W97°16.14'
 L-19, H-6

WINDU
 N31°31.83'
 W97°04.95'
 L-19, H-6

COLLEGE STATION
 113.3 CLL
 Chan 80
 N30°36.30'
 W96°25.24'
 L-19-21, H-7

HOARY
 N30°34.63'
 W97°46.52'
 L-19-21, H-7

CENTEX
 112.8 CWK
 Chan 75

SAN ANTONIO
 116.8 SAT
 Chan 115
 N29°38.64'-W98°27.68'
 L-19, H-7

NAVASOTA
 115.9 TNV
 Chan 106

NOTE: RADAR and DME required.
 NOTE: Props: Expect KEENE or TRI-GATE departure.
 NOTE: Maintain 240K until leaving 5000.

TAKEOFF MINIMUMS
 Rwys 13L/R, 17L/C/R, 18L/R, 31L/R,
 35L/C, 36L/R: Standard.
 Rwy 35R: Standard with minimum climb
 of 245' per NM to 1200.

(NARRATIVE ON FOLLOWING PAGE)
 (NOTES CONTINUED ON FOLLOWING PAGE)

NOTE: Chart not to scale.

SC-2, 19 MAY 2022 to 16 JUN 2022

SC-2, 19 MAY 2022 to 16 JUN 2022

JOE POOL FIVE DEPARTURE