

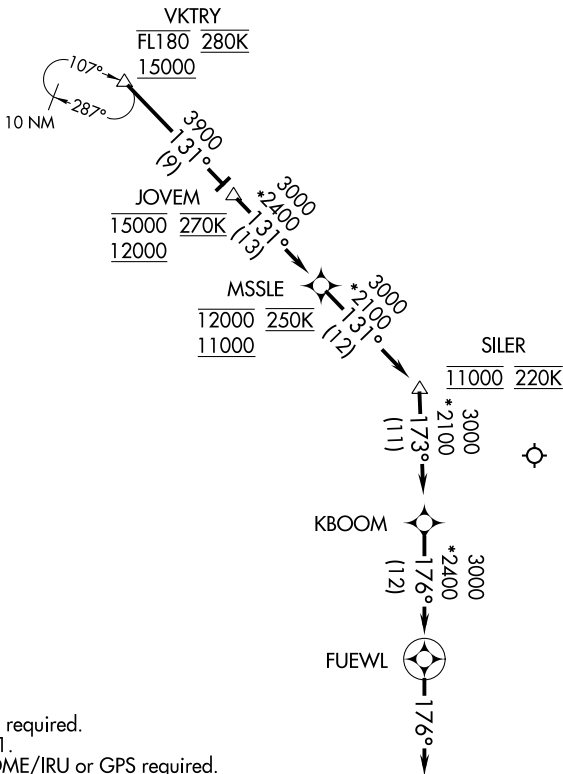
(VKTRY.JOVEM4) 17117

AL-6039 (FAA)

DALLAS-FORT WORTH INTL (DFW)
DALLAS-FORT WORTH, TEXAS

JOVEM FOUR ARRIVAL (RNAV) Arrival Route

D-ATIS ARR
123.775
REGIONAL APP CON
119.875 284.65



- NOTE: RADAR required.
- NOTE: RNAV 1.
- NOTE: DME/DME/IRU or GPS required.
- NOTE: Turbojet aircraft only.
- NOTE: For use when DFW is operating in a north flow.
- NOTE: When DFW is operating in a south flow, file and expect the VKTRY RNAV STAR.

NOTE: Chart not to scale.

ARRIVAL ROUTE DESCRIPTION

From VKTRY on track 131° to cross JOVEM between 12000 and 15000 and at 270K, then on track 131° to cross MSSLE between 11000 and 12000 and at 250K, then on track 131° to cross SILER at 11000 and at 220K, then on track 173° to KBOOM, then on track 176° to FUEWL, then on track 176°.

Expect RADAR vectors to final approach course.

JOVEM FOUR ARRIVAL (RNAV) Arrival Route

(VKTRY.JOVEM4) 26MAY16

DALLAS-FORT WORTH, TEXAS
DALLAS-FORT WORTH INTL (DFW)

SC-2, 19 MAY 2022 to 16 JUN 2022

SC-2, 19 MAY 2022 to 16 JUN 2022