

# KUSSO ONE DEPARTURE (RNAV)

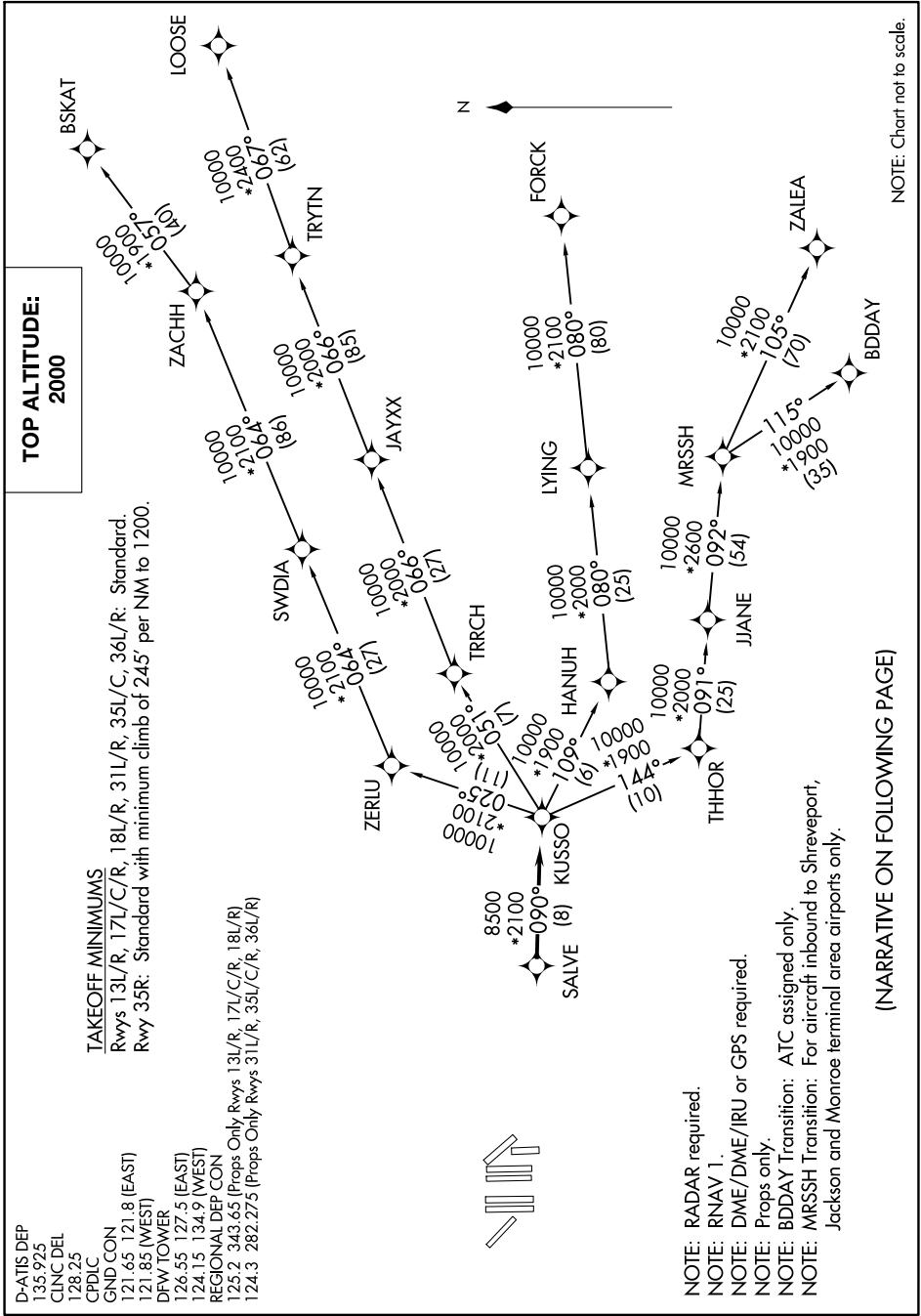
SC-2, 19 MAY 2022 to 16 JUN 2022

D-ATIS DEP  
135.925  
CLNC DEL  
128.25  
CPDLC  
GND CON  
121.65 121.8 (EAST)  
121.85 (WEST)  
DFW TOWER  
126.55 127.5 (EAST)  
124.15 134.9 (WEST)  
REGIONAL DEP CON  
125.2 343.65 (Props Only Rwy 13L/R, 17L/C/R, 18L/R)  
124.3 282.275 (Props Only Rwy 31L/R, 35L/C/R, 36L/R)

### TAKEOFF MINIMUMS

Rwys 13L/R, 17L/C/R, 18L/R, 31L/R, 35L/C, 36L/R: Standard.  
Rwy 35R: Standard with minimum climb of 245' per NM to 1200.

**TOP ALTITUDE:  
2000**



NOTE: RADAR required.  
NOTE: RNAV 1.  
NOTE: DME/DME/IRU or GPS required.  
NOTE: Props only.  
NOTE: BDDAY Transition: ATC assigned only.  
NOTE: MRSSH Transition: For aircraft inbound to Shreveport, Jackson and Monroe terminal area airports only.

(NARRATIVE ON FOLLOWING PAGE)

NOTE: Chart not to scale.

SC-2, 19 MAY 2022 to 16 JUN 2022

# KUSSO ONE DEPARTURE (RNAV)