

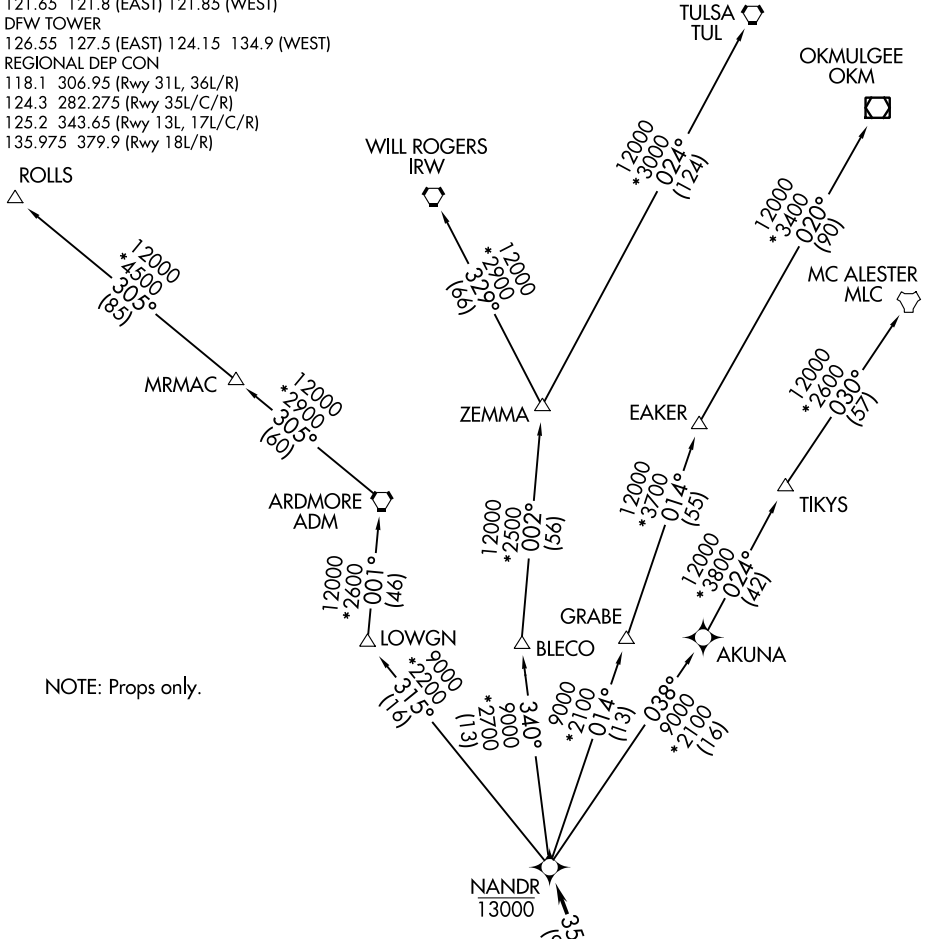
NANDR ONE DEPARTURE (RNAV)

D-ATIS DEP 135.925
 CLNC DEL 128.25
 CPDLC
 GND CON
 121.65 121.8 (EAST) 121.85 (WEST)
 DFW TOWER
 126.55 127.5 (EAST) 124.15 134.9 (WEST)
 REGIONAL DEP CON
 118.1 306.95 (Rwy 31L, 36L/R)
 124.3 282.275 (Rwy 35L/C/R)
 125.2 343.65 (Rwy 13L, 17L/C/R)
 135.975 379.9 (Rwy 18L/R)

RNAV 1 - DME/DME/IRU or GPS.

RADAR required.

**TOP ALTITUDE:
2000**



NOTE: Props only.

TAKEOFF MINIMUMS

Rwys 13L/R, 17L/C/R, 18L/R, 31L/R, 35L/C, 36L/R: Standard.
 Rwy 35R: 300-1 $\frac{3}{4}$ or standard with minimum climb of 228' per NM to 800, or alternatively, with standard takeoff and a normal 200' per NM climb gradient, takeoff must occur no later than 1700' prior to DER.

NOTE: Chart not to scale.

(NARRATIVE ON FOLLOWING PAGE)

NANDR ONE DEPARTURE (RNAV)

(NANDR1.NANDR) 24MAR22