

WAAS CH <b>99407</b> <b>W18B</b>	APP CRS <b>176°</b>	Rwy Idg <b>13400</b> TDZE <b>606</b> Apt Elev <b>606</b>
--	------------------------	--

# RNAV (GPS) RWY 18R

DALLAS-FORT WORTH INTL (DFW)

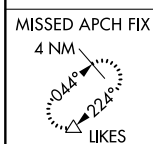
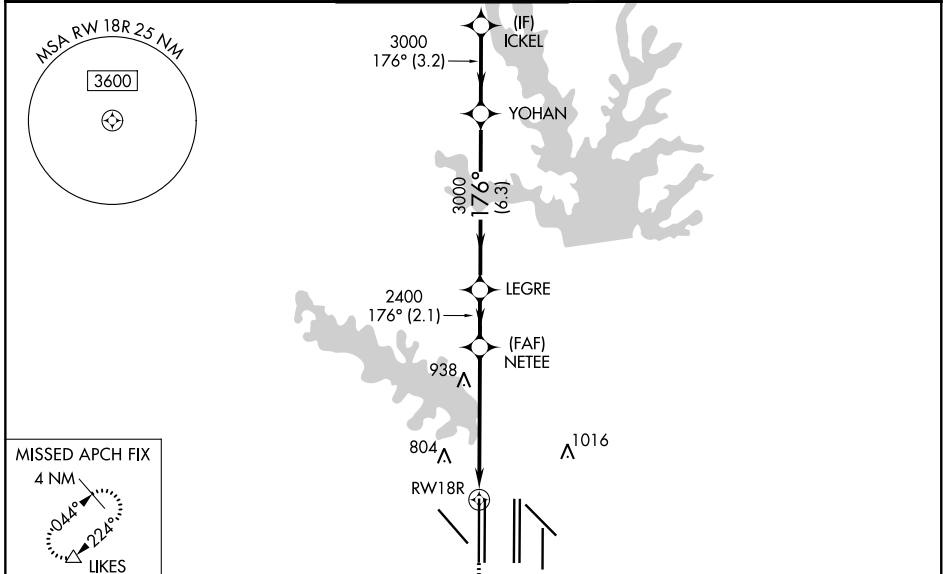
RADAR required for procedure entry. RNP APCH.

▼ Simultaneous approach authorized with Rwy 17L/C/R. For uncompensated Baro-VNAV systems, LNAV/VNAV NA below -4°C or above 54°C. LNAV procedure NA during simultaneous operations. Use of FD or AP providing RNAV track guidance required during simultaneous operations. For inop ALS, increase LNAV/VNAV all Cats visibility to RVR 6000 and LNAV Cats C and D visibility to 1¼ SM.

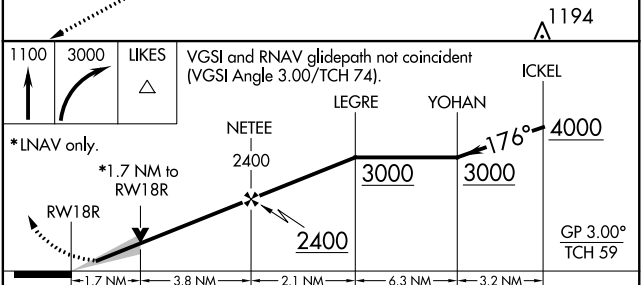
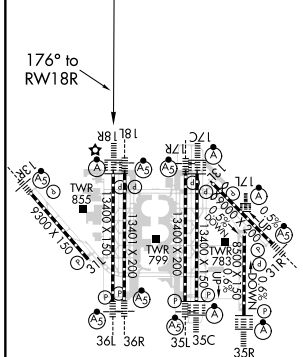
ALSF-2

MISSED APPROACH:  
Climb to 1100 then climbing right turn to 3000 direct LIKES and hold.

D-ATIS ARR <b>123.775</b> DEP <b>135.925</b>	REGIONAL APP CON <b>118.425</b>	DFW TOWER <b>126.55</b> EAST <b>127.5</b> EAST <b>124.15</b> WEST <b>134.9</b> WEST	GND CON <b>121.65</b> EAST <b>121.8</b> EAST <b>121.85</b> WEST	CLNC DEL <b>128.25</b>	CPDLC
--	------------------------------------	---	--	---------------------------	-------



ELEV <b>606</b>	<b>D</b>	TDZE <b>606</b>
-----------------	----------	-----------------



CATEGORY	A	B	C	D
LPV DA	806/18		200 (200-½)	
LNAV/VNAV DA	1012/40		406 (500-¾)	
LNAV MDA	1220/24 614 (700-½)		1220-1⅓ 614 (700-1⅓)	

HIRL all Rwys  
REIL Rwys 13L and 31L  
TDZ/CL all Rwys except 13L and 31L

SC-2, 19 MAY 2022 to 16 JUN 2022

SC-2, 19 MAY 2022 to 16 JUN 2022