

| | | |
|--|------------------------|--|
| WAAS CH 93805 W36B | APP CRS 356° | Rwy Idg 13400 TDZE 588 Apt Elev 607 |
|--|------------------------|--|

RNAV (GPS) RWY 36L

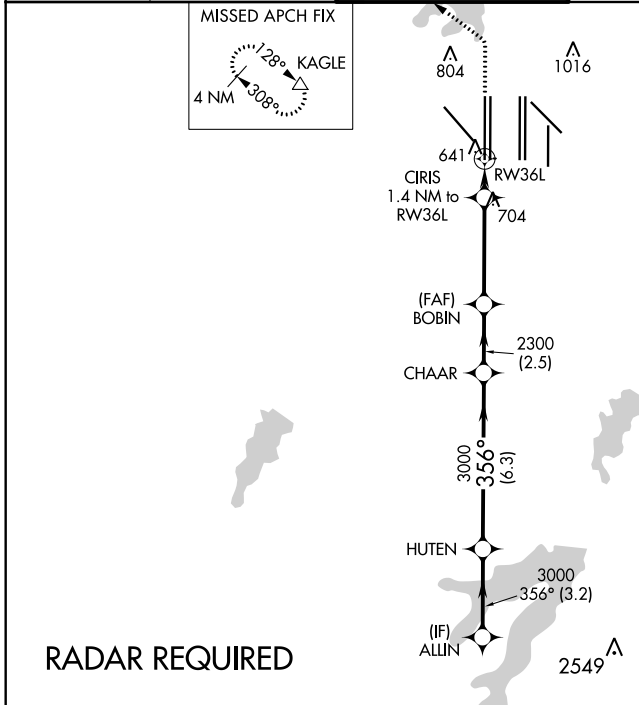
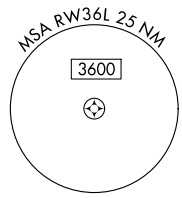
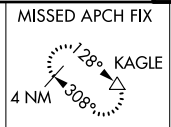
DALLAS-FORT WORTH INTL (DFW)

▼ For uncompensated Baro-VNAV systems, LNAV/VNAV NA below -4°C (25°F) or above 54°C (130°F). For inop MALSR, increase LNAV Cat C/D visibility to RVR 5500. Simultaneous approach authorized with Rwy 35L/C/R. DME/DME RNP-0.3 NA. LNAV procedure NA during simultaneous operations. Use of FD or AP providing RNAV track guidance required during simultaneous operations.

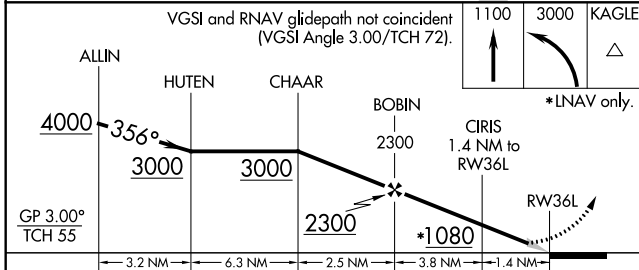


MISSED APPROACH: Climb to 1100 then climbing left turn to 3000 direct KAGLE and hold.

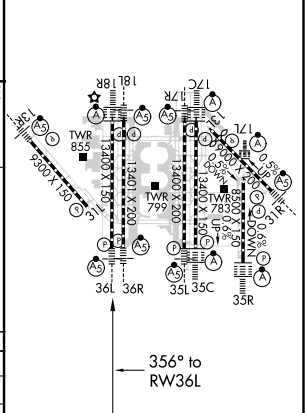
| | | | | | |
|--|------------------------------------|---|---|---------------------------|-------|
| D-ATIS ARR 123.775 DEP 135.925 | REGIONAL APP CON 118.425 | DFW TOWER 126.55 127.5 EAST 124.15 134.9 WEST | GND CON 121.65 121.8 EAST 121.85 WEST | CLNC DEL 128.25 | CPDLC |
|--|------------------------------------|---|---|---------------------------|-------|



RADAR REQUIRED



| | | |
|----------|----------|----------|
| ELEV 607 | D | TDZE 588 |
|----------|----------|----------|



HIRL all Rwy's
REIL Rwy's 13L and 31L
TDZ/CL all Rwy's except 13L and 31L

| CATEGORY | A | B | C | D |
|--------------|--------|---------------|---------------|---------------|
| LPV DA | | 788/18 | 200 (200-1/2) | |
| LNAV/VNAV DA | | 987/45 | 399 (400-2/3) | |
| LNAV MDA | 960/24 | 372 (400-1/2) | 960/35 | 372 (400-2/3) |

SC-2, 19 MAY 2022 to 16 JUN 2022

SC-2, 19 MAY 2022 to 16 JUN 2022