

WAAS CH <b>87005</b> <b>W36A</b>	APP CRS <b>356°</b>	Rwy Idg <b>13401</b> TDZE <b>581</b> Apt Elev <b>607</b>
--	------------------------	--

# RNAV (GPS) RWY 36R

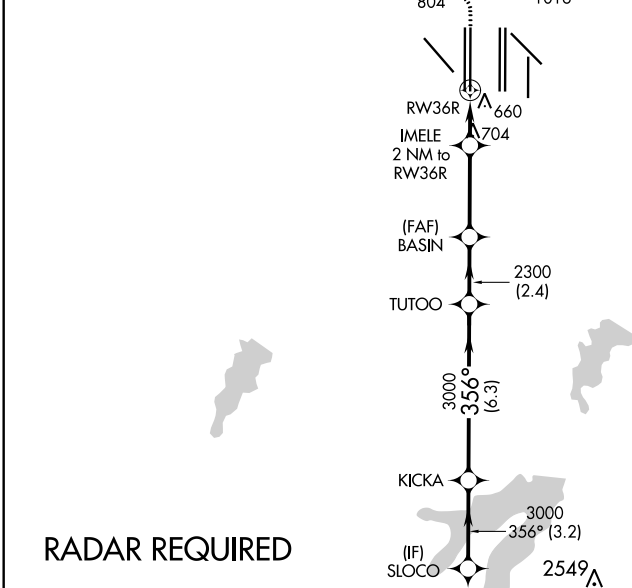
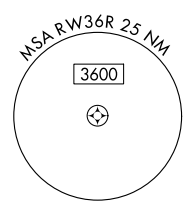
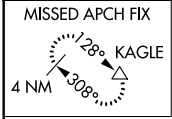
DALLAS-FORT WORTH INTL (DFW)

**▽** For uncompensated Baro-VNAV systems, LNAV/VNAV NA below -4°C (25°F) or above 54°C (130°F). For inop MALSRS, increase LNAV Cats C/D visibility to RVR 5500. Simultaneous approach authorized with Rwy 35L/C/R. DME/DME RNP-0.3 NA. LNAV procedure NA during simultaneous operations. Use of FD or AP providing RNAV track guidance required during simultaneous operations.

**MALSRS**

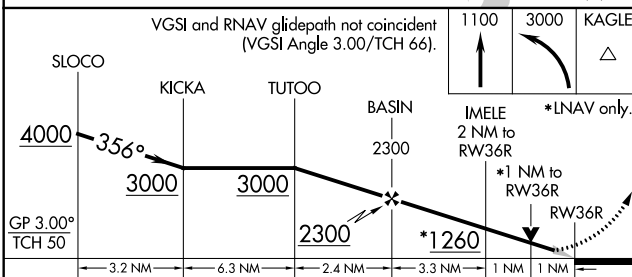
**MISSED APPROACH:** Climb to 1100 then climbing left turn to 3000 direct KAGLE and hold.

D-ATIS ARR <b>123.775</b> DEP <b>135.925</b>	REGIONAL APP CON <b>118.425</b>	DFW TOWER <b>126.55 127.5</b> EAST <b>124.15 134.9</b> WEST	GND CON <b>121.65 121.8</b> EAST <b>121.85</b> WEST	CLNC DEL <b>128.25</b>	CPDLC
--	------------------------------------	---	---	---------------------------	-------



SC-2, 19 MAY 2022 to 16 JUN 2022

SC-2, 19 MAY 2022 to 16 JUN 2022



ELEV 607	<b>D</b>	TDZE 581
----------	----------	----------

HIRL all Rwys  
REIL Rwys 13L and 31L  
TDZ/CL all Rwys except 13L and 31L

CATEGORY	A	B	C	D
LPV DA		781/18	200 (200-½)	
LNAV/VNAV DA		941/40	360 (400-¾)	
LNAV MDA	960/24	379 (400-½)	960/35	379 (400-¾)