


|                        |                        |
|------------------------|------------------------|
| APP CRS<br><b>135°</b> | Rwy Idg<br><b>9300</b> |
|                        | TDZE<br><b>591</b>     |
|                        | Apt Elev<br><b>606</b> |

# RNAV (RNP) Z RWY 13R

DALLAS-FORT WORTH INTL (DFW)

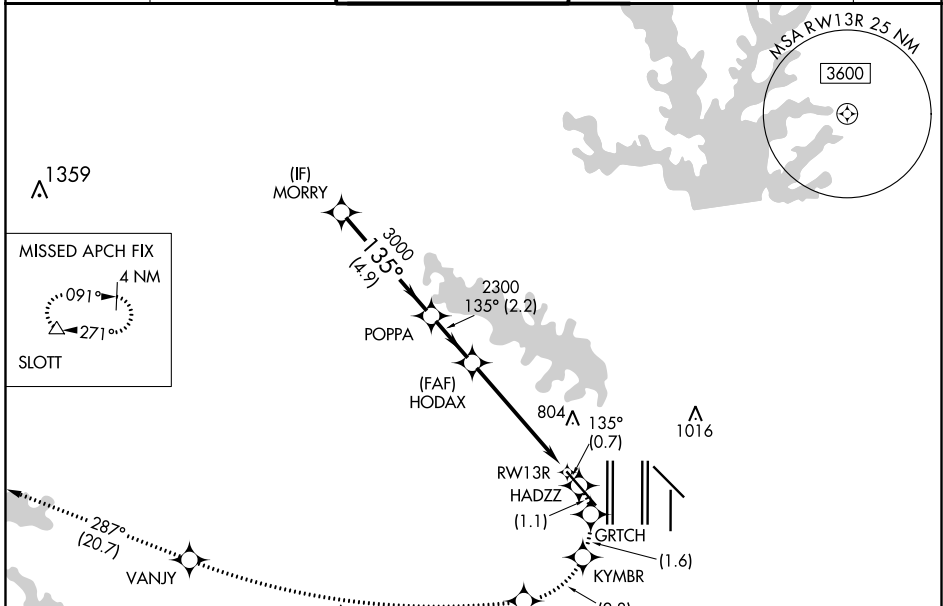
RNP AR APCH. RF required.

**▽** For uncompensated Baro-VNAV systems, procedure NA below -6°C or above 54°C. Missed approach requires RNP less than 1.0.

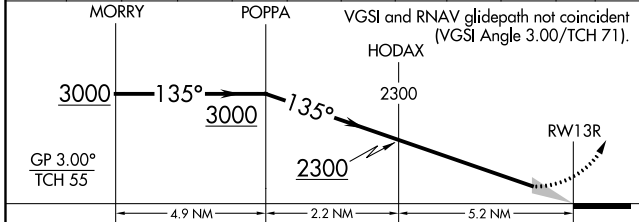
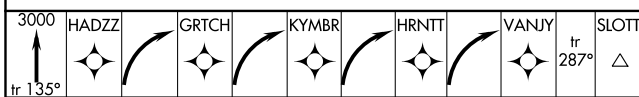
MALSR 

**MISSED APPROACH:** (Do not exceed 185K until HRNTT) Climb to 3000 on the RNAV missed approach route to SLOTT and hold.

|  |   |   |   |                           |       |
|--|---|---|---|---------------------------|-------|
| D-ATIS<br>ARR <b>123.775</b><br>DEP <b>135.925</b> | REGIONAL APP CON<br><b>133.15 118.1</b> | DFW TOWER<br><b>126.55 127.5</b> EAST<br><b>124.15 134.9</b> WEST | GND CON<br><b>121.65 121.8</b> EAST<br><b>121.85</b> WEST | CLNC DEL<br><b>128.25</b> | CPDLC |
|--|---|---|---|---------------------------|-------|



|          |          |
|----------|----------|
| ELEV 606 | TDZE 591 |
|----------|----------|



|             |         |   |              |   |
|-------------|---------|---|--------------|---|
| CATEGORY    | A       | B | C            | D |
| RNP 0.30 DA | 1041/45 |   | 450 (500-7%) |   |

**AUTHORIZATION REQUIRED**

HIRL all Rwys  
REIL Rwy's 13L and 31L  
TDZ/CL all Rwy's except 13L and 31L

SC-2, 19 MAY 2022 to 16 JUN 2022

SC-2, 19 MAY 2022 to 16 JUN 2022