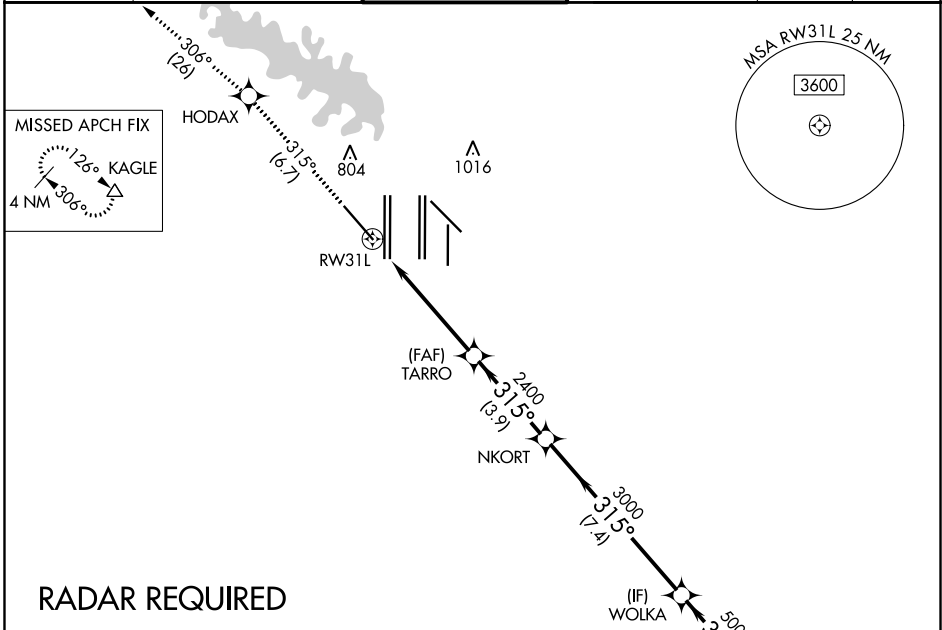


APP CRS 315°	Rwy Idg 9300 TDZE 581 Apt Elev 607
------------------------	---

RNAV (RNP) Z RWY 31L

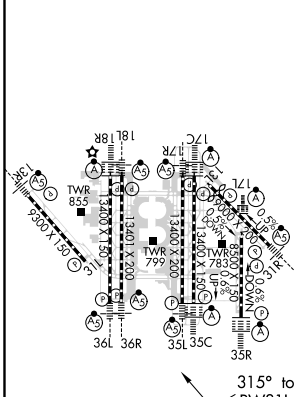
DALLAS-FORT WORTH INTL (DFW)

<p>▼ For uncompensated Baro-VNAV systems, procedure NA below -4°C (25°F) or above 54°C (130°F). Simultaneous approach authorized with Rwy 31R. GPS Required. Use of FD or AP providing RNAV track guidance required during simultaneous operations.</p>		<p>MISSED APPROACH: Climb to 3000 on track 315° to HODAX and on track 306° to KAGLE and hold.</p>			
D-ATIS ARR 123.775 DEP 135.925	REGIONAL APP CON 118.425 127.075 119.4	DFW TOWER 126.55 127.5 EAST 124.15 134.9 WEST	GND CON 121.65 121.8 EAST 121.85 WEST	CLNC DEL 128.25	CPDLC



RADAR REQUIRED

ELEV 607	D	TDZE 581
-----------------	----------	-----------------



HIRL all Rwy
REIL Rwy 13L and 31L
TDZ/CL all Rwy except 13L and 31L

3000	HODAX	KAGLE	VGSI and RNAV glidepath not coincident (VGSI Angle 3.13/TCH 72).	
↑ fr 315°	◆	△		
tr 306°				

RW31L	TARRO	NKORT	WOLKA	ZUREK
	2400		5000	5000
		3000		
				GP 3.00° TCH 54
	5.6 NM	3.9 NM	7.4 NM	4 NM

CATEGORY	A	B	C	D
RNP 0.30 DA	951/60 370 (400-1¼)			

AUTHORIZATION REQUIRED

SC-2, 19 MAY 2022 to 16 JUN 2022

SC-2, 19 MAY 2022 to 16 JUN 2022