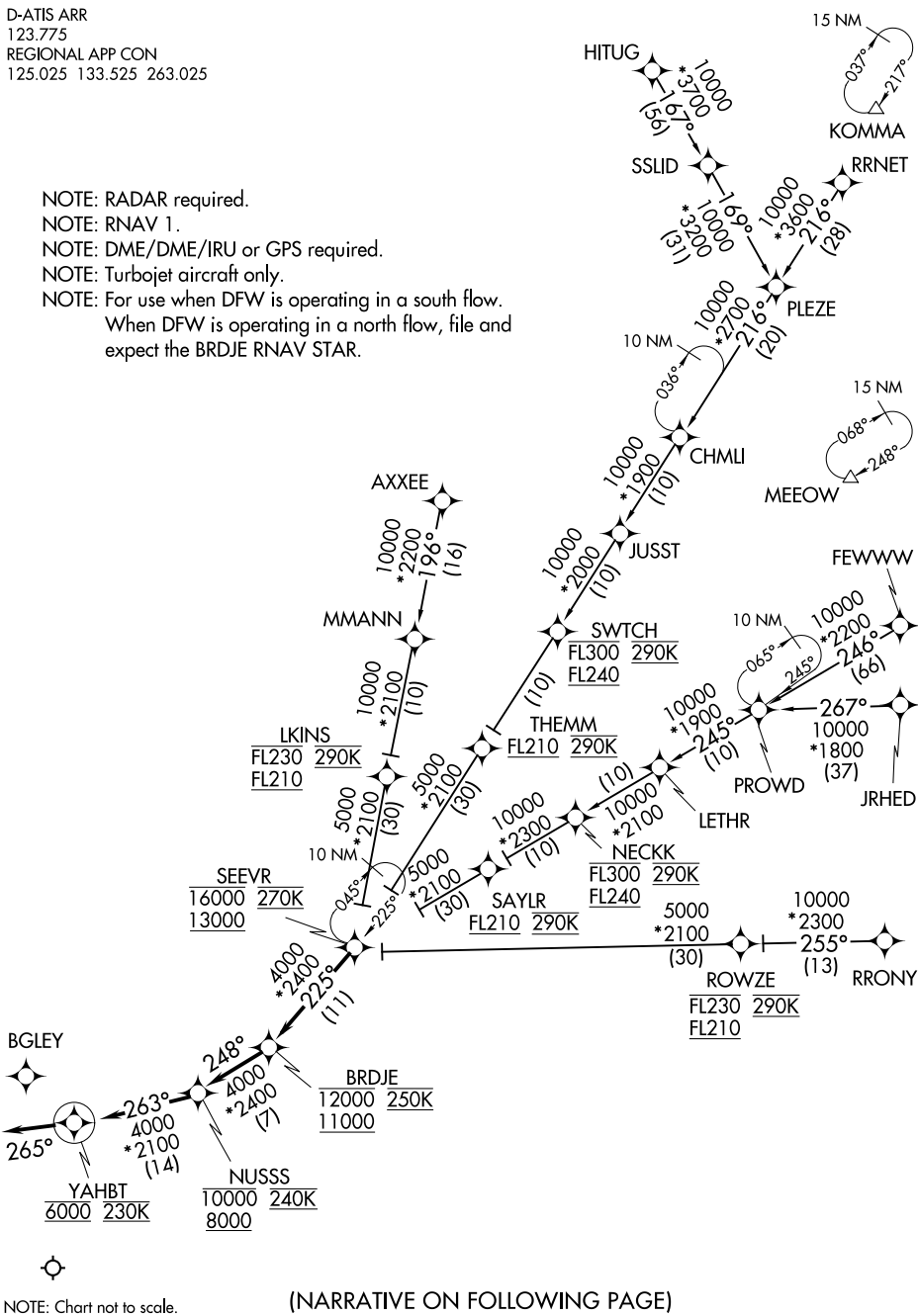


SEEVR FOUR ARRIVAL (RNAV)

D-ATIS ARR
123.775
REGIONAL APP CON
125.025 133.525 263.025

- NOTE: RADAR required.
- NOTE: RNAV 1.
- NOTE: DME/DME/IRU or GPS required.
- NOTE: Turbojet aircraft only.
- NOTE: For use when DFW is operating in a south flow.
When DFW is operating in a north flow, file and expect the BRDJE RNAV STAR.



SC-2, 19 MAY 2022 to 16 JUN 2022

SC-2, 19 MAY 2022 to 16 JUN 2022

NOTE: Chart not to scale.

(NARRATIVE ON FOLLOWING PAGE)