

VKTRY TWO ARRIVAL (RNAV) Transition Routes

SC-2, 19 MAY 2022 to 16 JUN 2022

D-ATIS ARR
123.775
REGIONAL APP CON
119.875 284.65

BELFR TRANSITION (BELFR.VKTRY2):
(ATC assigned only.)

FAWNT TRANSITION (FAWNT.VKTRY2):
(ATC assigned only.)

HNKER TRANSITION (HNKER.VKTRY2):
(ATC assigned only.)

HOFF TRANSITION (HOFF.VKTRY2):
(ATC assigned only.)

IBAKE TRANSITION (IBAKE.VKTRY2):
(ATC assigned only.)

KLAWW TRANSITION (KLAWW.VKTRY2):
(ATC assigned only.)

MDANO TRANSITION (MDANO.VKTRY2):
(ATC assigned only.)

RBUKL TRANSITION (RBUKL.VKTRY2):
(ATC assigned only.)

(For OKC Terminal Area Departures only.)

TURKI TRANSITION (TURKI.VKTRY2):
(ATC assigned only.)

TYPTN TRANSITION (TYPTN.VKTRY2):
(ATC assigned only.)

WLLTR TRANSITION (WLLTR.VKTRY2):
(ATC assigned only.)

NOTE: RADAR Required.

NOTE: RNAV 1.

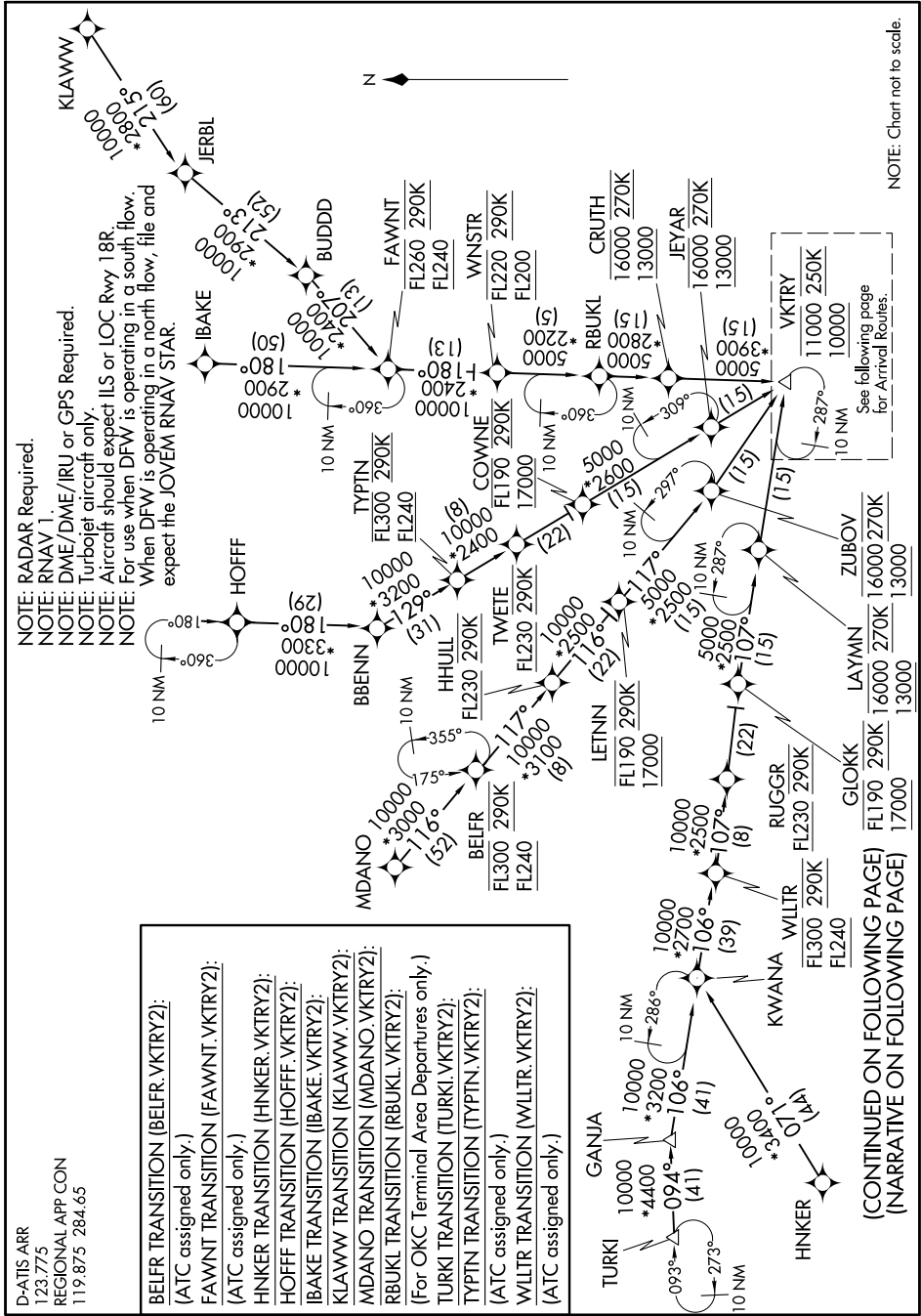
NOTE: DME/DME/IRU or GPS Required.

NOTE: Turbojet aircraft only.

NOTE: Aircraft should expect ILS or LOC Rwy 18R.

NOTE: For use when DFW is operating in a south flow.

NOTE: When DFW is operating in a north flow, file and expect the JOVEV RNAV STAR.



NOTE: Chart not to scale.

See following page for Arrival Routes.

SC-2, 19 MAY 2022 to 16 JUN 2022

BELFR TRANSITION (BELFR.VKTRY2):
(ATC assigned only.)

FAWNT TRANSITION (FAWNT.VKTRY2):
(ATC assigned only.)

HNKER TRANSITION (HNKER.VKTRY2):
(ATC assigned only.)

HOFF TRANSITION (HOFF.VKTRY2):
(ATC assigned only.)

IBAKE TRANSITION (IBAKE.VKTRY2):
(ATC assigned only.)

KLAWW TRANSITION (KLAWW.VKTRY2):
(ATC assigned only.)

MDANO TRANSITION (MDANO.VKTRY2):
(ATC assigned only.)

RBUKL TRANSITION (RBUKL.VKTRY2):
(ATC assigned only.)

(For OKC Terminal Area Departures only.)

TURKI TRANSITION (TURKI.VKTRY2):
(ATC assigned only.)

TYPTN TRANSITION (TYPTN.VKTRY2):
(ATC assigned only.)

WLLTR TRANSITION (WLLTR.VKTRY2):
(ATC assigned only.)

VKTRY TWO ARRIVAL (RNAV) Transition Routes

(VKTRY.VKTRY2) 26MAY16

SC-2, 19 MAY 2022 to 16 JUN 2022

(CONTINUED ON FOLLOWING PAGE)
(NARRATIVE ON FOLLOWING PAGE)