

WAAS CH <b>82020</b> <b>W35A</b>	APP CRS <b>352°</b>	Rwy Idg TDZE Apt Elev	<b>4201</b> <b>2012</b> <b>2011</b>
--	------------------------	-----------------------------	---

# RNAV (GPS) RWY 35

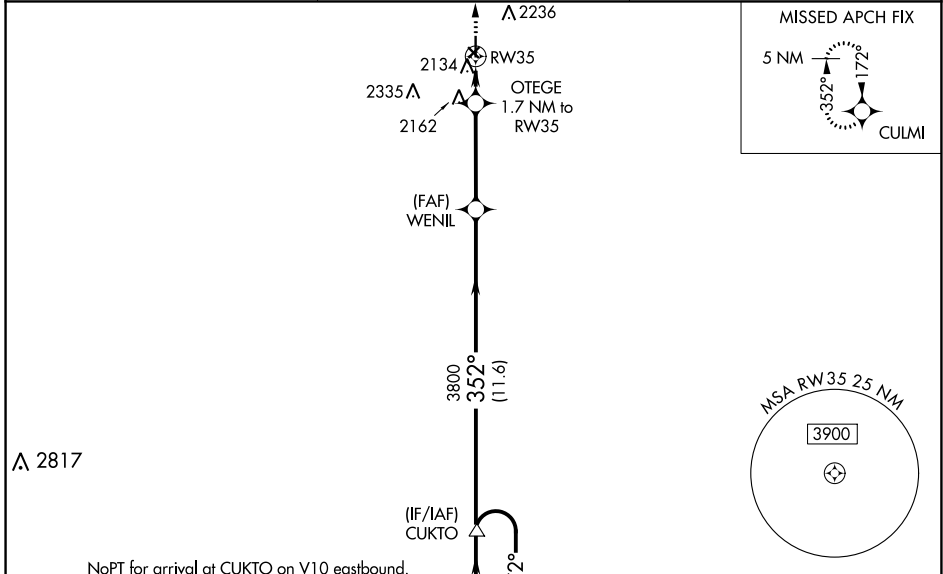
LARNED-PAWNEE COUNTY (L.Q.R.)

RNP APCH.

**⚠** Baro-VNAV NA when using Great Bend altimeter setting. For uncompensated Baro-VNAV systems, LNAV/VNAV NA below -18°C or above 54°C. Rwy 35 helicopter visibility reduction below 1 SM NA. When local altimeter setting not received, use Great Bend altimeter setting and increase all DA 49 feet and LNAV/VNAV all Cats visibility 1/8 SM; increase all MDA 60 feet and increase LNAV Cat C and Circling Cat C visibility 1/4 SM. Circling NA to Rws 4, 12, 22 and 30. Procedure NA at night.

**MISSED APPROACH:**  
Climb to 4500 direct CULMI and hold.

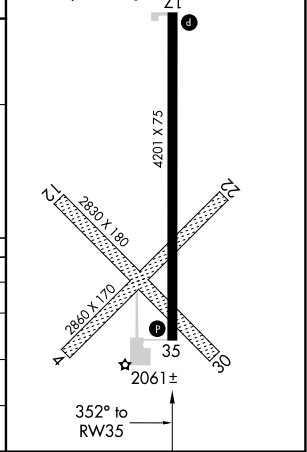
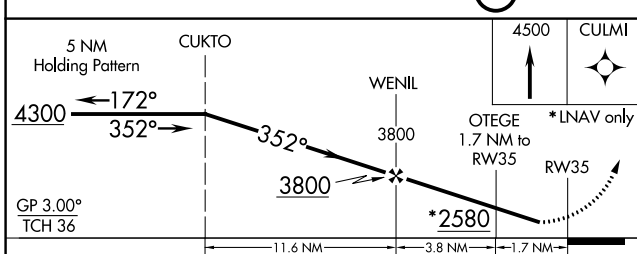
AWOS-3 <b>119.875</b>	KANSAS CITY CENTER <b>124.4 322.4</b>	UNICOM <b>122.8 (CTAF) 0</b>
--------------------------	--	---------------------------------



⚠ 2817

NoPT for arrival at CUKTO on V10 eastbound.

ELEV 2011	TDZE 2012
REIL Rws 17 and 35 <b>0</b>	
MIRL Rwy 17-35 <b>0</b>	



CATEGORY	A	B	C	D
LPV DA	2262-1	250 (300-1)		NA
LNAV/VNAV DA	2337-1 1/8	325 (400-1 1/8)		NA
LNAV MDA	2420-1	408 (500-1)	2420-1 1/2 408 (500-1 1/2)	NA
CIRCLING	2500-1 489 (500-1)	2600-1 589 (600-1)	2600-1 1/2 589 (600-1 1/2)	NA

NC-2, 19 MAY 2022 to 16 JUN 2022

NC-2, 19 MAY 2022 to 16 JUN 2022