

APP CRS	Rwy Idg	<b>4842</b>
<b>173°</b>	TDZE	<b>651</b>
	Apt Elev	<b>658</b>

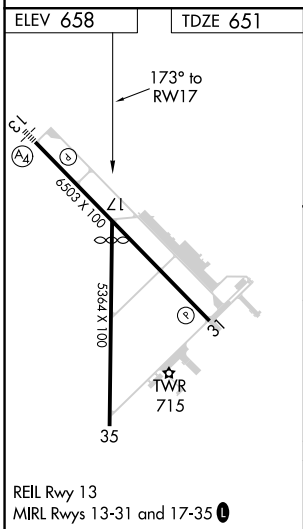
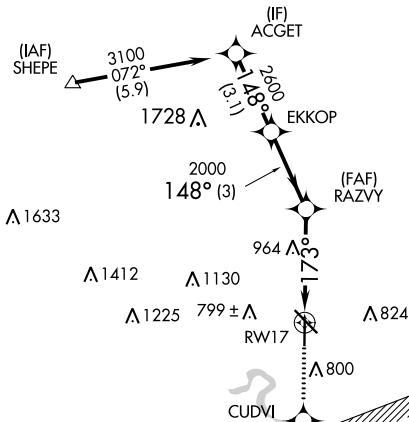
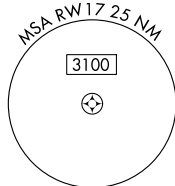
# RNAV (GPS) RWY 17

NEW BRAUNFELS NTL (BAZ)

RNP APCH.		<p><b>▽</b> When local altimeter setting not received, use San Marcos Rgnl altimeter setting and increase all MDAs 60 feet and visibility Cat C ¼ SM. VDP NA when using San Marcos Rgnl altimeter setting.</p> <p><b>▲</b> MISSED APPROACH: Climb to 3500 direct CUDVI and via 112° track to NUMMO and hold, continue climb-in-hold to 3500.</p>	
-----------	--	--	--

ATIS	SAN ANTONIO APP CON	NEW BRAUNFELS TOWER*	GND CON	CLNC DEL	CLNC DEL	UNICOM	CTAF
<b>119.325</b>	<b>124.45 335.625</b>	<b>127.05 285.4</b>	<b>120.175</b>	<b>134.75</b>	<b>134.75</b> (When twr closed)	<b>122.7</b>	<b>127.05</b> <b>①</b>

Procedure NA for arrivals at SHEPE via V17 southwest bound.



3500	CUDVI	NUMMO	ACGET
↑	✧	✧	✧
	Ir 112°		
<p>1.6 NM to RW17</p> <p>3.03° TCH 45</p> <p>173°</p> <p>2000</p>		<p>RAZVY</p> <p>2600</p> <p>148°</p> <p>EKKOP</p> <p>3100</p>	<p>Procedure Turn NA</p>
1.6 NM		2.5 NM	3 NM
1.6 NM		3.1 NM	3.1 NM
CATEGORY	A	B	C
LNAV MDA	1220-1	569 (600-1)	1220-1½ 569 (600-1½)
			1220-1¾ 569 (600-1¾)

SC-3, 19 MAY 2022 to 16 JUN 2022

SC-3, 19 MAY 2022 to 16 JUN 2022