

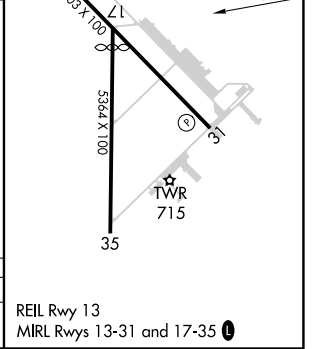
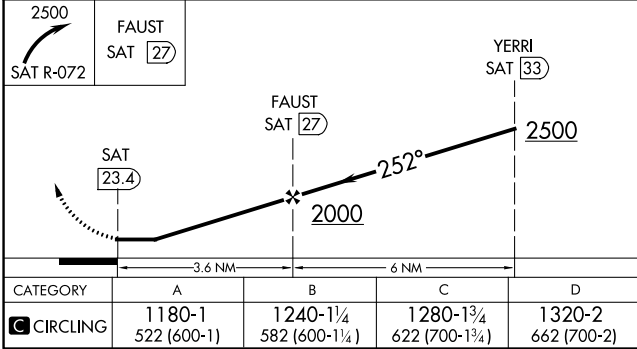
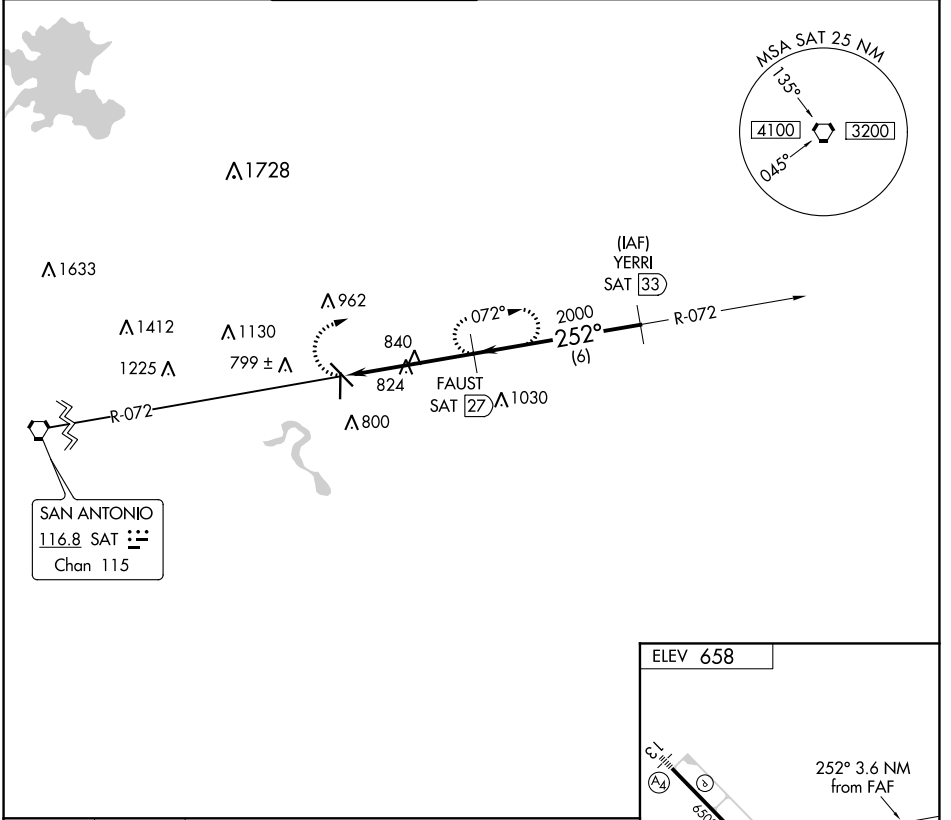
VORTAC SAT <b>116.8</b> Chan <b>115</b>	APP CRS <b>252°</b>	Rwy Idg TDZE Apt Elev	<b>N/A</b> <b>N/A</b> <b>658</b>
---	------------------------	-----------------------------	--

**VOR/DME-A**  
NEW BRAUNFELS NTL (BAZ)

RADAR required for procedure entry.

MISSED APPROACH: Climbing right turn to 2500 on SAT R-072 to FAUST/27 DME and hold.

ATIS <b>119.325</b>	SAN ANTONIO APP CON <b>124.45 335.625</b>	NEW BRAUNFELS TOWER* <b>127.05 285.4</b>	GND CON <b>120.175</b>	CLNC DEL <b>134.75</b>	CLNC DEL <b>134.75</b> (When twr closed)	UNICOM <b>122.7</b>	CTAF <b>127.05</b>
------------------------	--	---	---------------------------	---------------------------	--	------------------------	-----------------------



CATEGORY	A	B	C	D
CIRCLING	1180-1 522 (600-1)	1240-1¼ 582 (600-1¼)	1280-1¾ 622 (700-1¾)	1320-2 662 (700-2)

REIL Rwy 13  
MIRL Rwy 13-31 and 17-35

SC-3, 19 MAY 2022 to 16 JUN 2022

SC-3, 19 MAY 2022 to 16 JUN 2022