

VOR XUB 112.5	APP CRS 204°	Rwy Idg TDZE Apt Elev	5405 716 725
-------------------------	------------------------	-----------------------------	---

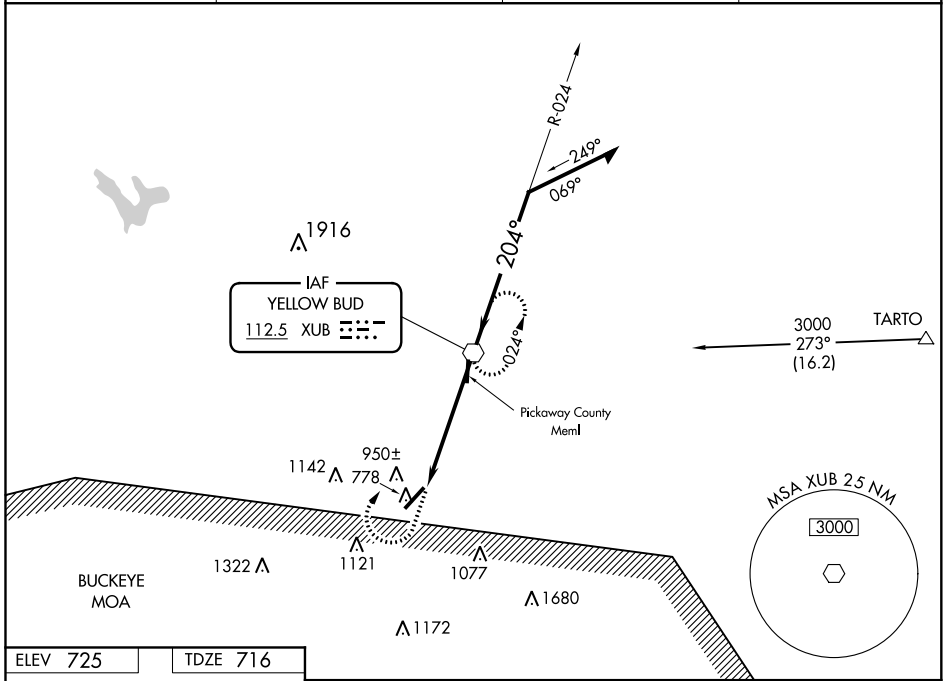
VOR RWY 23

ROSS COUNTY (R/ZT)

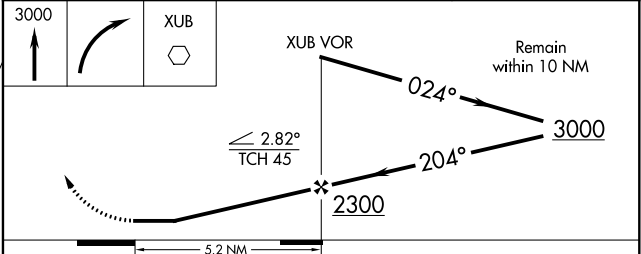
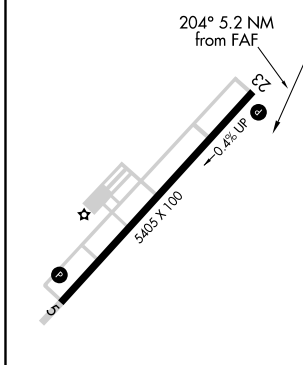
NA When local altimeter setting not received, use Rickenbacker Intl altimeter setting. When VGSI is inop, Straight-in and Circling Rwy 23 procedures NA at night.

MISSED APPROACH: Climb to 3000 then right turn direct XUB VOR and hold.

AWOS-3 119.225	COLUMBUS APP CON 134.0 279.6	UNICOM 122.8 (CTAF)	123.0 0
--------------------------	--	-------------------------------	-----------------------



ELEV 725	TDZE 716
----------	----------



REIL Rwys 5 and 23 **0**
MRLL Rwy 5-23 **0**

FAF to MAP 5.2 NM					
Knots	60	90	120	150	180
Min:Sec	5:12	3:28	2:36	2:05	1:44

CATEGORY	A	B	C	D
S-23	1220-1	504 (500-1)	1220-1½	504 (500-1½)
CIRCLING	1340-1 615 (700-1)	1360-1 635 (700-1)	1500-2¼ 775 (800-2¼)	1540-2¾ 815 (900-2¾)
RICKENBACKER INTL ALTIMETER SETTING MINIMUMS				
S-23	1280-1	564 (600-1)	1280-1⅝	564 (600-1⅝)
CIRCLING	1400-1 675 (700-1)	1420-1 695 (700-1)	1560-2½ 835 (900-2½)	1600-2¾ 875 (900-2¾)

EC-2, 19 MAY 2022 to 16 JUN 2022

EC-2, 19 MAY 2022 to 16 JUN 2022