

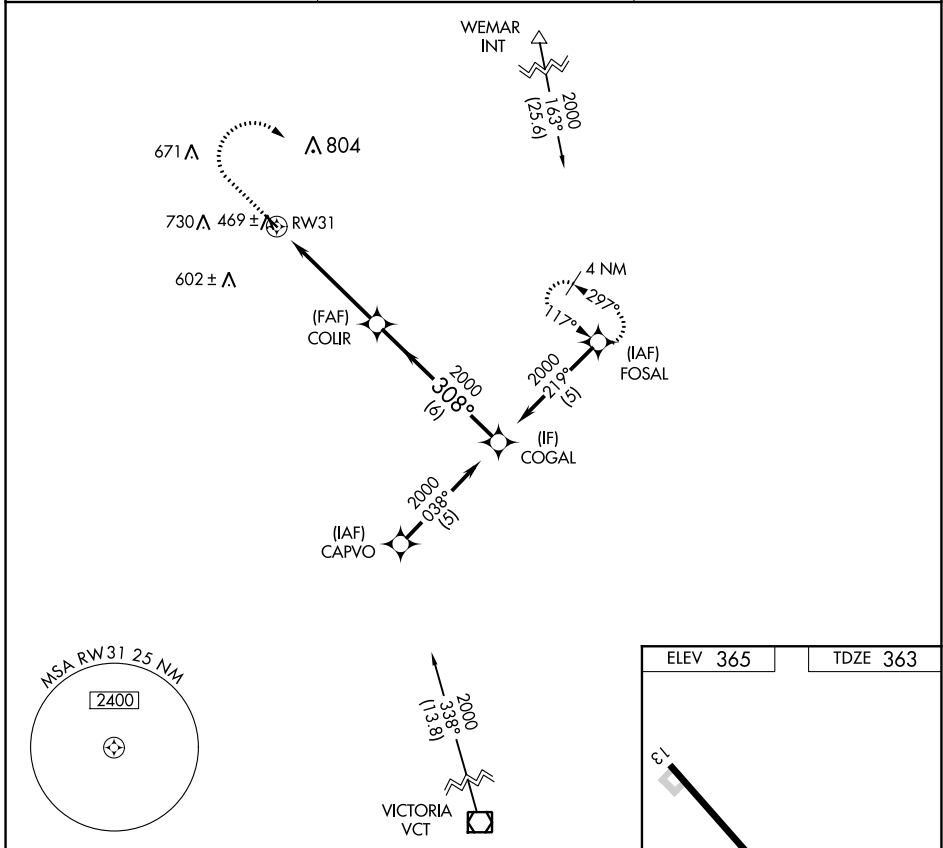
APP CRS	Rwy Idg	<b>3444</b>
<b>308°</b>	TDZE	<b>363</b>
	Apt Elev	<b>365</b>

# RNAV (GPS) RWY 31

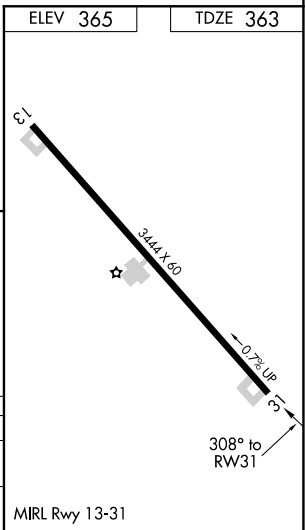
YOAKUM MUNI (T85)

RNP APCH-GPS.	MISSED APPROACH: Climb to 1000 then climbing right turn to 2000 direct FOSAL and hold.
▼ Use Victoria Rgnl altimeter setting. Procedure not authorized at night.	
▲ NA	

VCT ASOS <b>119.025</b>	HOUSTON CENTER <b>132.8 343.7</b>	CTAF <b>122.9</b>
----------------------------	--------------------------------------	----------------------



1000	2000	FOSAL	COLR	COGAL
↑	↷	✧		
RW31		308°		2000
3.04°		2000		Procedure Turn NA
TCH 45		5 NM		6 NM
CATEGORY	A	B	C	D
LNVA MDA	840-1	477 (500-1)	840-1¼ 477 (500-1¼)	NA
CIRCLING	920-1	555 (600-1)	1200-2½ 835 (900-2½)	NA



SC-3, 19 MAY 2022 to 16 JUN 2022

SC-3, 19 MAY 2022 to 16 JUN 2022