

APP CRS
033°

Rwy Idg **5132**
TDZE **4793**
Apt Elev **4830**

GPS RWY 3

SEDONA (SE/Z)

When local altimeter not received, procedure not authorized.

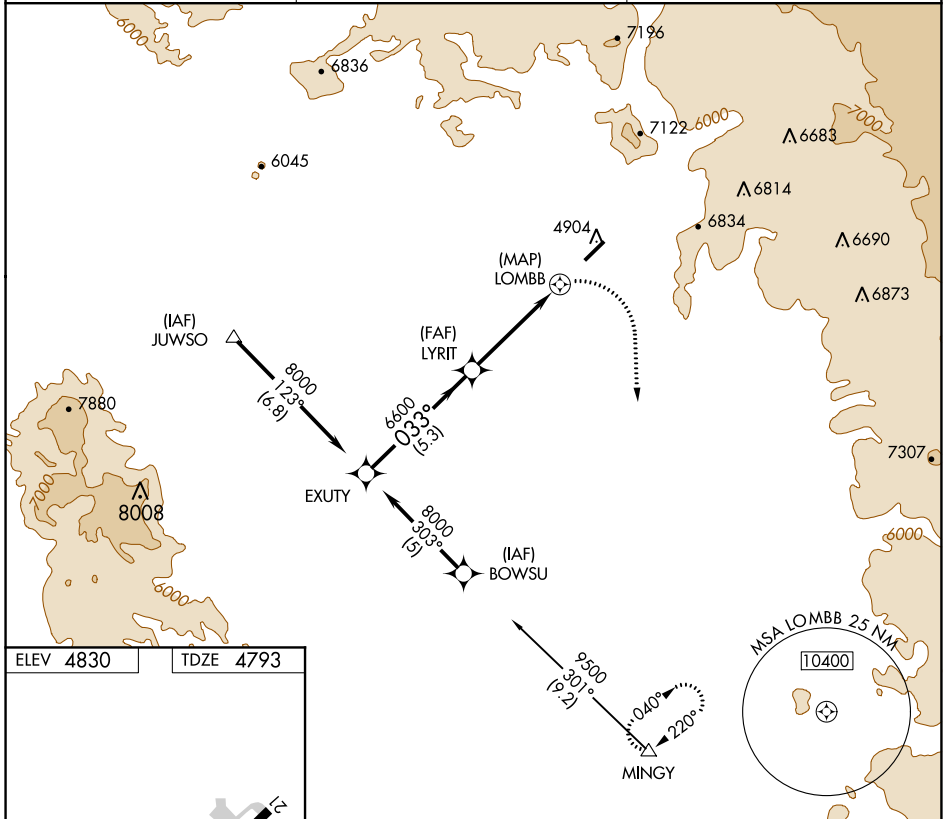
NA Cat D circling not authorized northwest of Rwy 3-21.
Circling Rwy 21 NA at night.

MISSED APPROACH: Climbing right turn to 12000 direct MINGY WP and hold.

AWOS-3PT **118.525**

PHOENIX APP CON **126.375 236.775**

UNICOM **123.0 (CTAF)**



ELEV 4830 TDZE 4793

MIRL Rwy 3-21
REIL Rwy 3 and 21

Procedure Turn NA

VGSI and descent angles not coincident (VGSI Angle 3.00/TCH 44).

12000 MINGY

	5.3 NM		4.4 NM		1.3 NM	
CATEGORY	A		B		C	
S-3	6140-1½ 1347 (1400-1½)		6240-1½ 1447 (1500-1½)		6560-3 1767 (1800-3)	
CIRCLING	6140-1½ 1310 (1400-1½)		6240-1½ 1410 (1500-1½)		NA	

SW-4, 19 MAY 2022 to 16 JUN 2022

SW-4, 19 MAY 2022 to 16 JUN 2022