

|  |                        |                 |
|--|------------------------|-----------------|
| WAAS<br>CH <b>40215</b><br><b>W21A</b> | APP CRS<br><b>205°</b> | Rwy Idg<br>5190 |
|  |                        | TDZE<br>194     |
|  |                        | Apt Elev<br>198 |

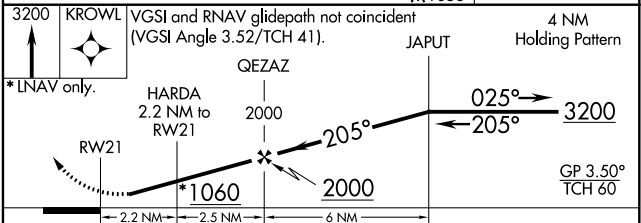
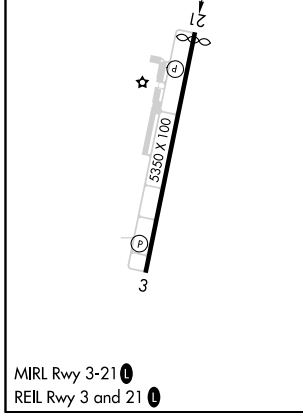
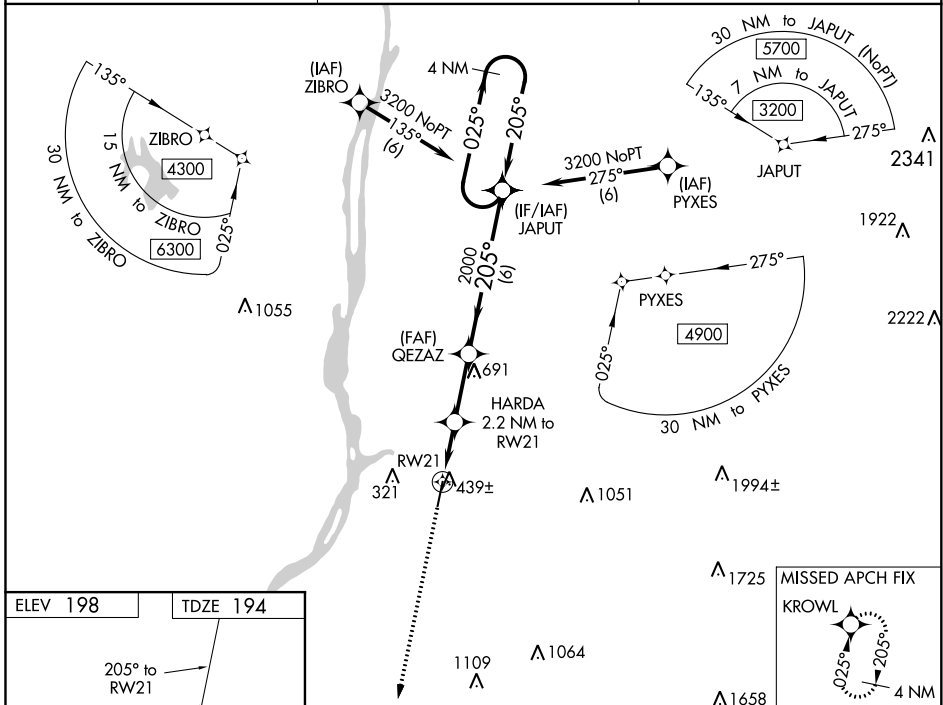
# RNAV (GPS) RWY 21

COLUMBIA COUNTY (1B1)

**⚠** Baro-VNAV NA when using Albany altimeter setting. For uncompensated Baro-VNAV systems, LNAV/VNAV NA below -15°C (5°F) or above 14°C (58°F). Rwy 21 helicopter visibility reduction below 1 SM NA. DME/DME RNP -0.3 NA. Straight-In Rwy 21 and Circling Rwy 21 NA at night. When local altimeter setting not received, use Albany altimeter setting and increase LPV DA to 638 feet and visibility to 1½ SM all Cats, LNAV/VNAV DA to 709 feet and visibility to 1¾ SM all Cats; increase all MDA 80 feet, LNAV Cat C/D visibility to 1¾ SM, Circling Cat C to 2¼ SM, and Cat D to 3 SM.

**⚠ NA** MISSED APPROACH: Climb to 3200 direct KROWL and hold, continue climb-in-hold to 3200.

|                          |  |                                  |
|--------------------------|--|----------------------------------|
| AWOS-3<br><b>133.525</b> | ALBANY APP CON<br><b>132.825 307.2</b> | UNICOM<br><b>123.05 (CTAF) 0</b> |
|--------------------------|--|----------------------------------|



| CATEGORY          | A                    | B                    | C                      | D                       |
|-------------------|----------------------|----------------------|------------------------|-------------------------|
| LPV DA            |                      | 562-1                | 368 (400-1)            |                         |
| LNAV/VNAV DA      |                      | 633-1¼               | 439 (500-1¼)           |                         |
| LNAV MDA          | 700-1                | 506 (600-1)          | 700-1¾                 | 506 (600-1¾)            |
| <b>C</b> CIRCLING | 740-1<br>542 (600-1) | 860-1<br>662 (700-1) | 860-1¾<br>662 (700-1¾) | 1020-2¾<br>822 (900-2¾) |

NE-2, 19 MAY 2022 to 16 JUN 2022

NE-2, 19 MAY 2022 to 16 JUN 2022