

VORTAC FBC 108.2 Chan 19	APP CRS 298°	Rwy Idg TDZE Apt Elev	4502 763 763
--	------------------------	-----------------------------	---

VOR RWY 27

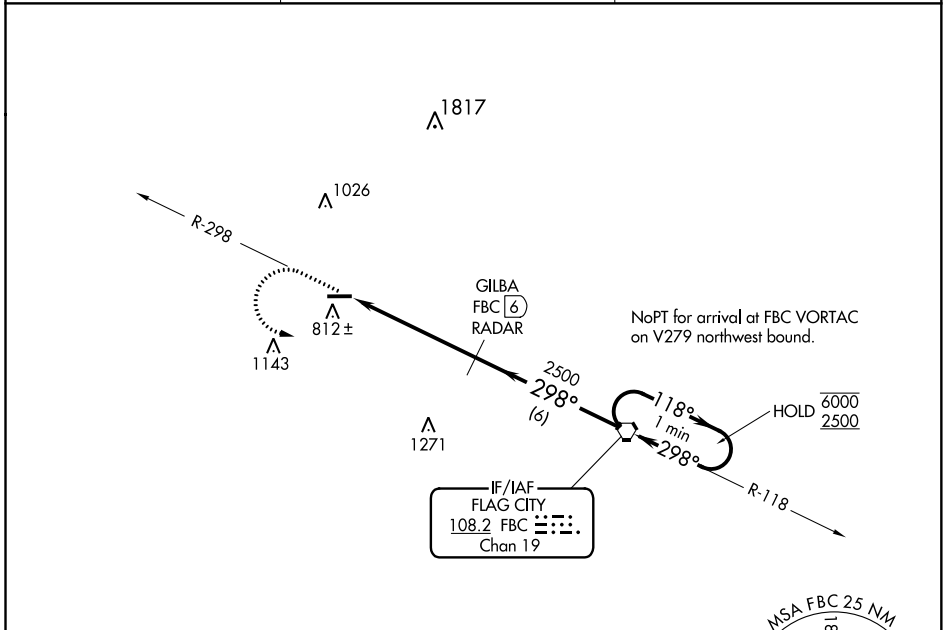
PUTNAM COUNTY (OWX)

RADAR or DME required.

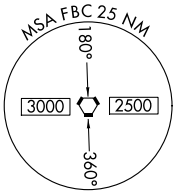
▼ Rwy 27 helicopter visibility reduction below 1 SM NA.
▲ NA Straight-in, Circling Rwy 27 NA at night.

MISSED APPROACH: Climb to 2500 on FBC VORTAC R-298 then left turn direct FBC VORTAC and hold.

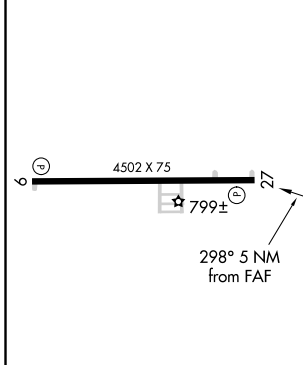
AWOS-3 120.525	TOLEDO APP CON 120.8 317.55	UNICOM 122.7 (CTAF) 0
--------------------------	---------------------------------------	---------------------------------



IF/IAF
FLAG CITY
108.2 FBC
Chan 19

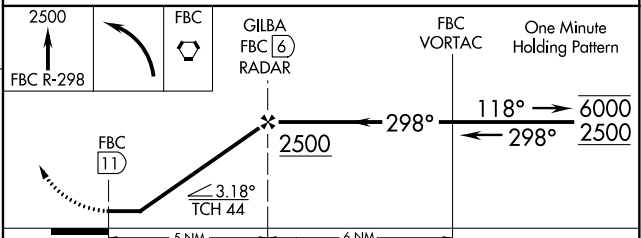


ELEV 763	TDZE 763
----------	----------



REIL Rwys 9 and 27
MRL Rwy 9-27

FAF to MAP 5 NM					
Knots	60	90	120	150	180
Min:Sec	5:00	3:20	2:30	2:00	1:40



CATEGORY	A	B	C	D
S-27	1220-1	457 (500-1)	NA	NA
CIRCLING	1220-1	457 (500-1)	NA	NA

EC-2, 19 MAY 2022 to 16 JUN 2022

EC-2, 19 MAY 2022 to 16 JUN 2022