

SWABR ONE DEPARTURE (RNAV)

ROCKWALL, TEXAS

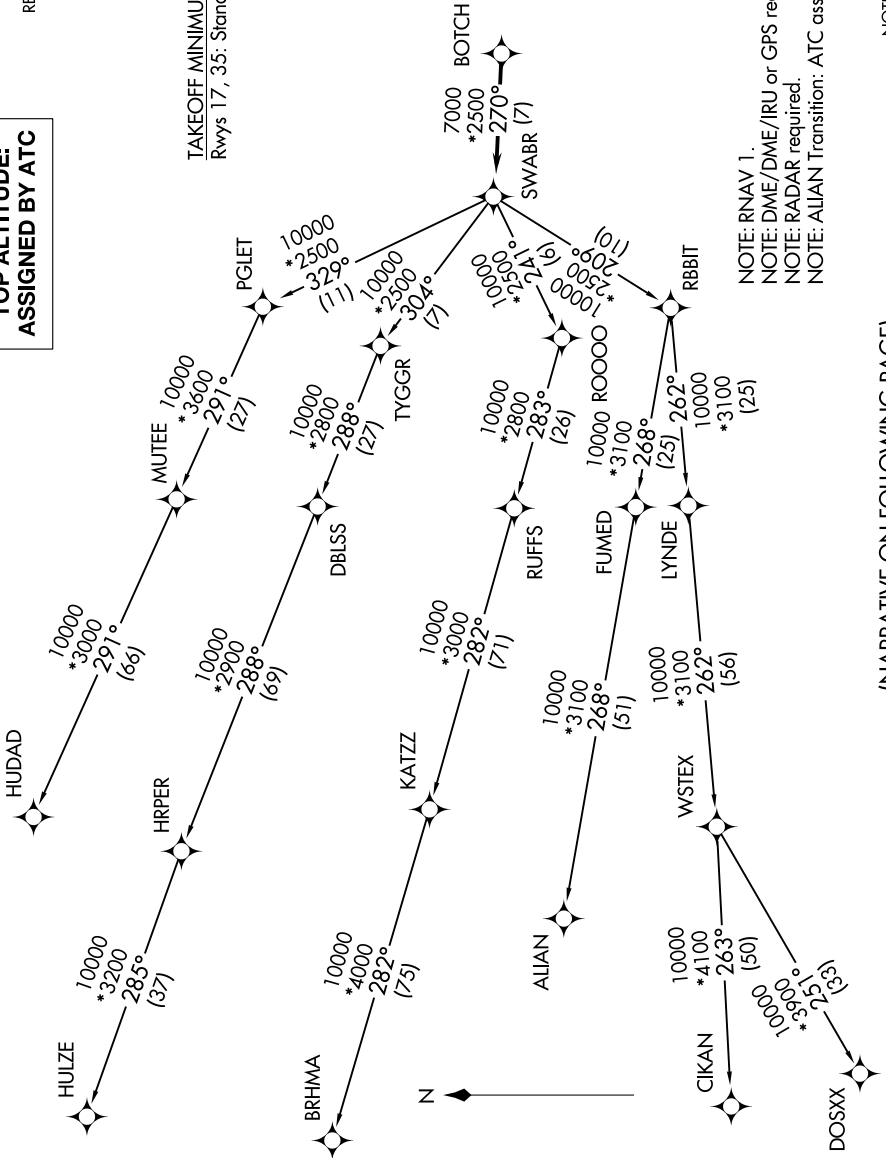
CTAF
122.8
REGIONAL DEP CON
124.3 282.275

TOP ALTITUDE: ASSIGNED BY ATC

TAKEOFF MINIMUMS
Rwys 17, 35: Standard.

NOTE: RNAV 1.
NOTE: DME/DME/IRU or GFS required.
NOTE: RADAR required.
NOTE: ALIAN Transition: ATC assigned only.

NOTE: Chart not to scale.



SC-2, 19 MAY 2022 to 16 JUN 2022

(NARRATIVE ON FOLLOWING PAGE)

SC-2, 19 MAY 2022 to 16 JUN 2022