

WAAS CH <b>97416</b> <b>W25A</b>	APP CRS <b>252°</b>	Rwy Idg TDZE <b>643</b> Apt Elev <b>643</b>	<b>4000</b> <b>643</b> <b>643</b>
--	------------------------	---	---

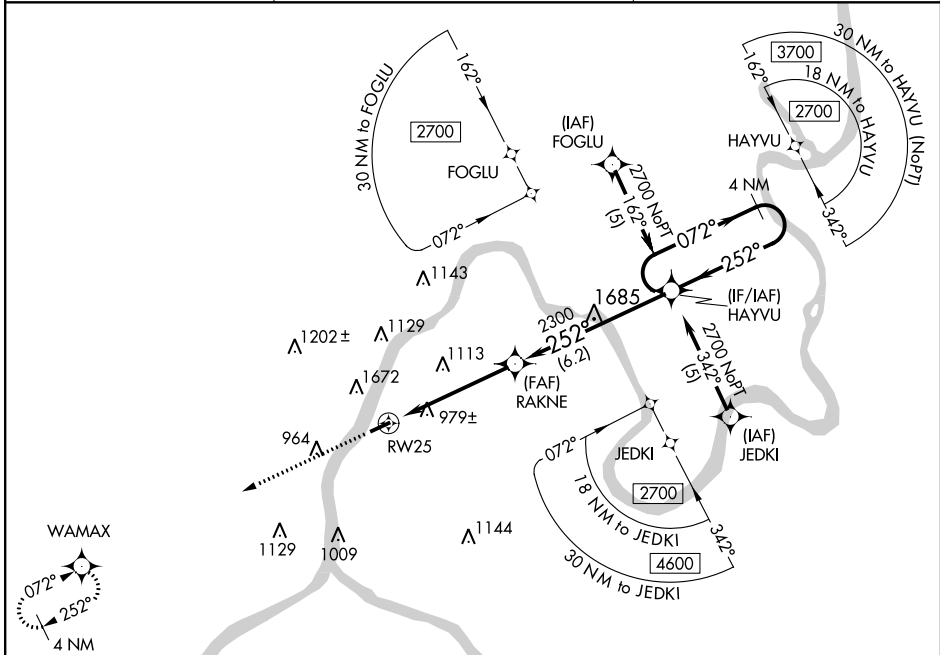
# RNAV (GPS) RWY 25

MASON COUNTY (3I2)

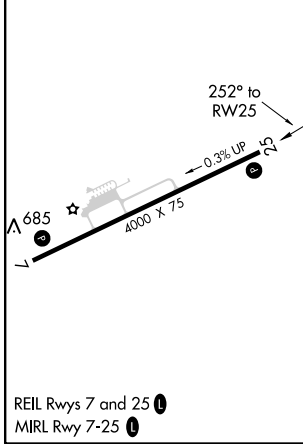
**⚠** Circling NA NW of Rwy 7-25. Baro-VNAV NA when using Athens/Albany, OH altimeter setting. For uncompensated Baro-VNAV systems, LNAV/VNAV NA below -16° C (4°F) or above 47° C (116°F). DME/DME RNP - 0.3 NA. Visibility reduction by helicopters NA. When local altimeter setting not received, use Athens/Albany, OH altimeter setting and increase all DA 61 feet and all MDA 80 feet; increase LPV all Cats visibility ¼ mile and increase LNAV-VNAV all Cats visibility 1 mile.

**⚠** MISSED APPROACH: Climb to 3200 direct WAMAX and hold.

AWOS-3 <b>119.675</b>	HUNTINGTON APP CON <b>128.4 270.1</b>	UNICOM <b>122.8 (CTAF) 0</b>
--------------------------	--	---------------------------------



ELEV <b>643</b>	TDZE <b>643</b>
-----------------	-----------------



	3200 WAMAX	HAYVU	4 NM Holding Pattern
	↑	★	
	252°	252°	072° → 2700
	2300	2300	← 252°
	5 NM	6.2 NM	GP 3.00° TCH 54
CATEGORY	A	B	C D
LPV DA		1430-2¾	787 (800-2¾)
LNAV/VNAV DA		1727-4	1084 (1100-4)
LNAV MDA	1700-1¼ 1057 (1100-1¼)	1700-1½ 1057 (1100-1½)	1700-3 1057 (1100-3)
CIRCLING	1700-1¼ 1057 (1100-1¼)	1700-1½ 1057 (1100-1½)	1700-3 1057 (1100-3)

NE-4, 19 MAY 2022 to 16 JUN 2022

NE-4, 19 MAY 2022 to 16 JUN 2022