

APP CRS	Rwy ldg	4000
072°	TDZE	643
	Apt Elev	643

RNAV (GPS) RWY 7

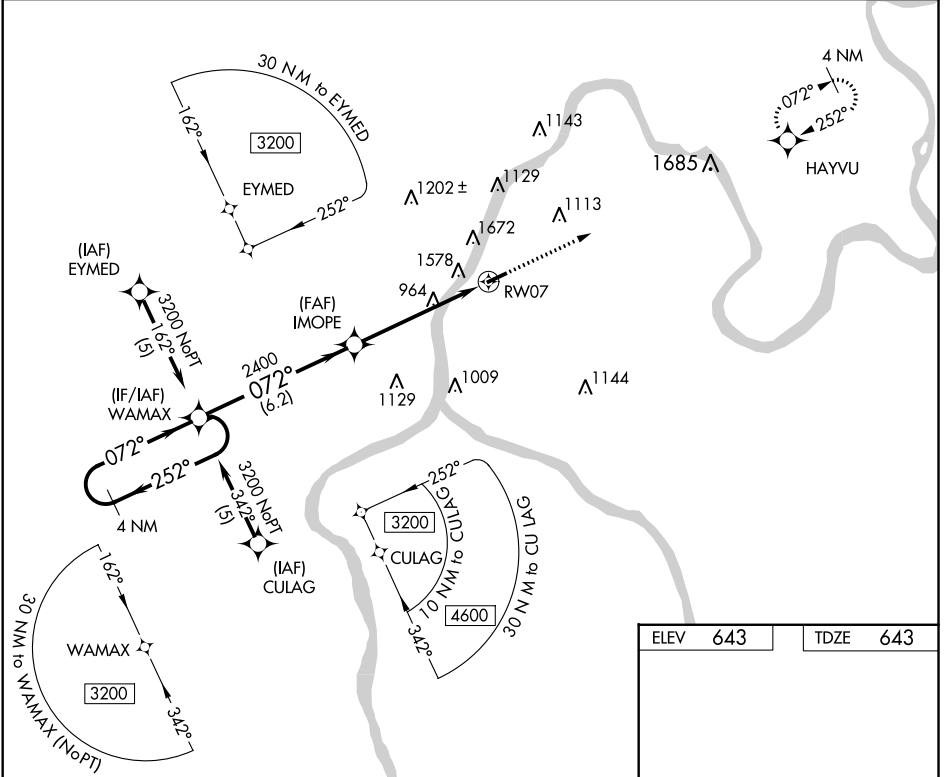
MASON COUNTY (3I2)

⚠ Circling NA NW of Rwy 7-25. DME/DME RNP- 0.3 NA. Visibility reduction by helicopters NA. When local altimeter setting not received, use Athens/Albany, OH altimeter setting and increase all MDA 80 feet. Straight-in and Circling NA at night to Rwy 7.

⚠ MISSED APPROACH: Climb to 2700 direct HAYVU and hold.

❄ -17°C

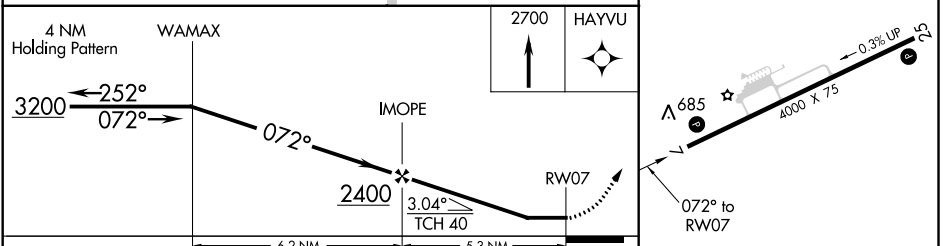
AWOS-3 119.675	HUNTINGTON APP CON 128.4 270.1	UNICOM 122.8 (CTAF) 0
--------------------------	--	--



NE-4, 19 MAY 2022 to 16 JUN 2022

NE-4, 19 MAY 2022 to 16 JUN 2022

ELEV	643	TDZE	643
------	------------	------	------------



CATEGORY	A	B	C	D
RNAV MDA	1880-1¼ 1237 (1300-1¼)	1880-1½ 1237 (1300-1½)	1880-3	1237 (1300-3)
CIRCLING	1880-1¼ 1237 (1300-1¼)	1880-1½ 1237 (1300-1½)	1880-3	1237 (1300-3)

