

WAAS CH 99629 W11A	APP CRS 112°	Rwy Idg 3198 TDZE 604 Apt Elev 604
--	------------------------	---

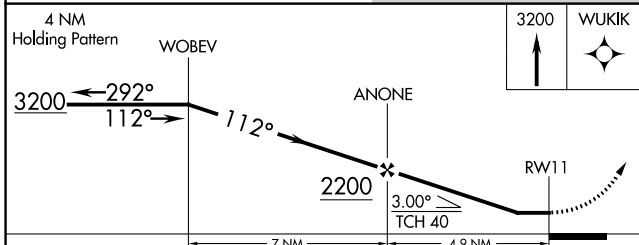
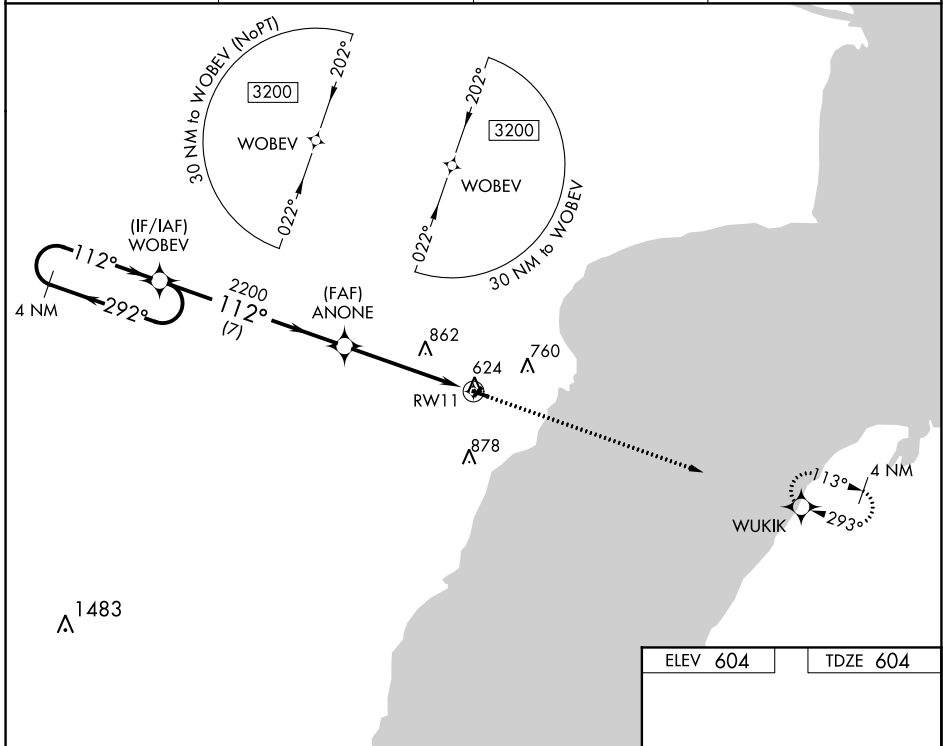
RNAV (GPS) RWY 11

OCONTO/J DOUGLAS BAKE MUNI (OCQ)

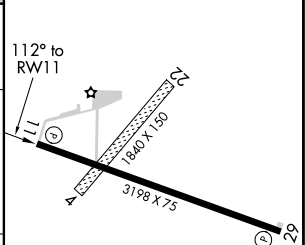
▼ Use Menominee, MI altimeter setting; when not received, use Green Bay altimeter setting and increase all MDA 40 feet and visibility Circling Cat C ¼ SM.
▲ NA Procedure NA at night. DME/DME RNP-0.3 NA. Visibility reduction by helicopters NA.

MISSED APPROACH:
Climb to 3200 direct WUKIK and hold.

AWOS-3 120.925	MNM AWOS-3PT 109.6	GREEN BAY APP CON ★ 120.3 338.2	UNICOM 122.8 (CTAF) 0
--------------------------	------------------------------	---	---------------------------------



ELEV 604	TDZE 604
----------	----------



CATEGORY	A	B	C	D
LP MDA	1200-1	596 (600-1)	1200-1¾ 596 (600-1¾)	NA
LNAV MDA	1220-1	616 (700-1)	1220-1¾ 616 (700-1¾)	NA
CIRCLING	1220-1	616 (700-1)	1260-1¾ 656 (700-1¾)	NA

REIL Rwy 11 and 29 **0**
 MIRL Rwy 11-29 **0**

EC-3, 19 MAY 2022 to 16 JUN 2022

EC-3, 19 MAY 2022 to 16 JUN 2022