

WAAS CH 82311 W22A	APP CRS 218°	Rwy Idg TDZE 1025 Apt Elev 1025	6000
--	------------------------	---	-------------

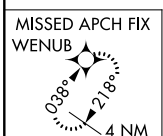
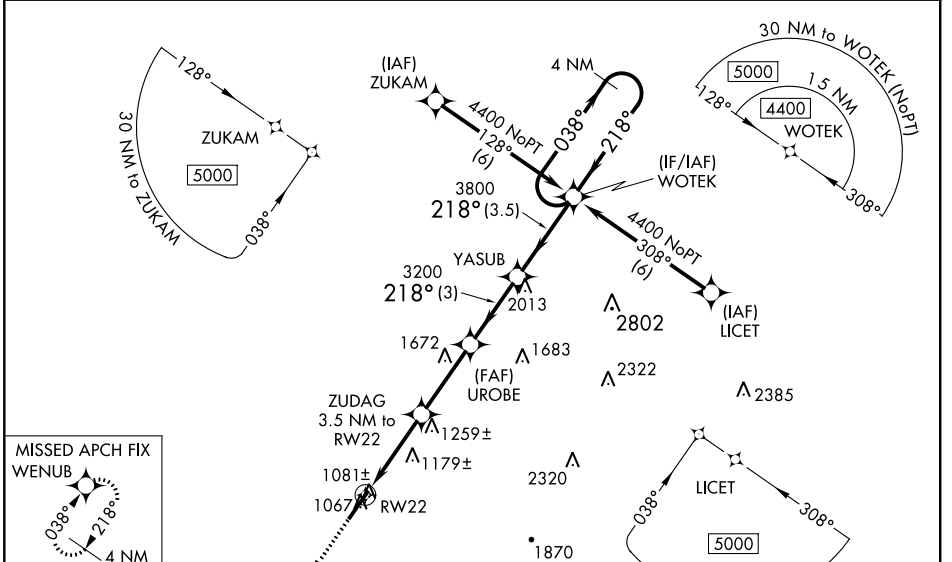
RNAV (GPS) RWY 22

UPPER CUMBERLAND RGNL (SRB)

⚠ Baro-VNAV NA when using Crossville altimeter setting. For uncompensated Baro-VNAV systems, LNAV/VNAV NA below -17°C (2°F) or above 54°C (130°F). DME/DME RNP-0.3 NA. When local altimeter setting not received, use Crossville altimeter setting and increase LPV DA to 1447 feet, LNAV/VNAV DA to 1633 feet, increase LPV and LNAV/VNAV visibility ¾ SM. Increase all MDA 180 feet and LNAV Cat C visibility ¼ SM, Cat D visibility ½ SM. Increase Circling Cat C visibility ¾ SM and Circling Cat D visibility ¼ SM. VDP NA when using Crossville altimeter setting.

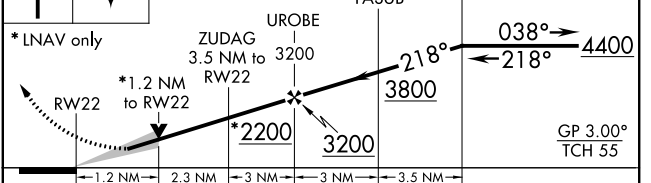
MISSED APPROACH:
Climb to 4000 direct WENUB and hold.

AWOS-3 128.25	MEMPHIS CENTER 132.9 290.3	UNICOM 122.975 (CTAF) ①
-------------------------	--------------------------------------	-----------------------------------



ELEV 1025	D	TDZE 1025
-----------	----------	-----------

4000 WENUB VGSI and RNAV glidepath not coincident (VGSI Angle 3.00/TCH 25). 4 NM WOTEK Holding Pattern



CATEGORY	A	B	C	D
LPV DA	1275-¾		250 (300-¾)	
LNAV/VNAV DA	1461-1½		436 (500-1½)	
LNAV MDA	1440-1	415 (500-1)	1440-1¼	415 (500-1¼)
CIRCLING	1480-1	455 (500-1)	1600-1½	1880-2¾
			575 (600-1½)	855 (900-2¾)

HIRL Rwy 4-22 ①
 REIL Rwys 4 and 22 ①
 RLLS Rwy 4 ①

SE-1, 19 MAY 2022 to 16 JUN 2022

SE-1, 19 MAY 2022 to 16 JUN 2022