

APP CRS 147°	Rwy Idg TDZE Apt Elev	N/A N/A 61
------------------------	-----------------------------	---------------------------------------

RNAV (GPS)-A

JACKSON COUNTY (26R)

RNP APCH.

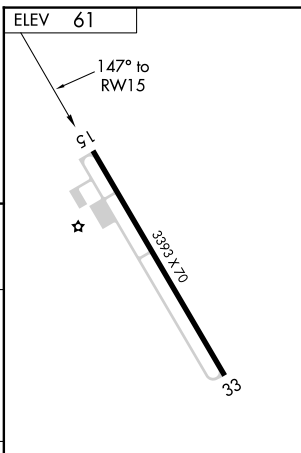
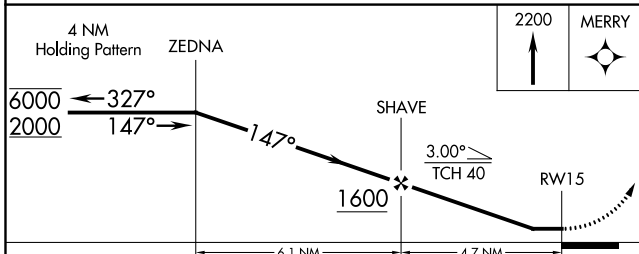
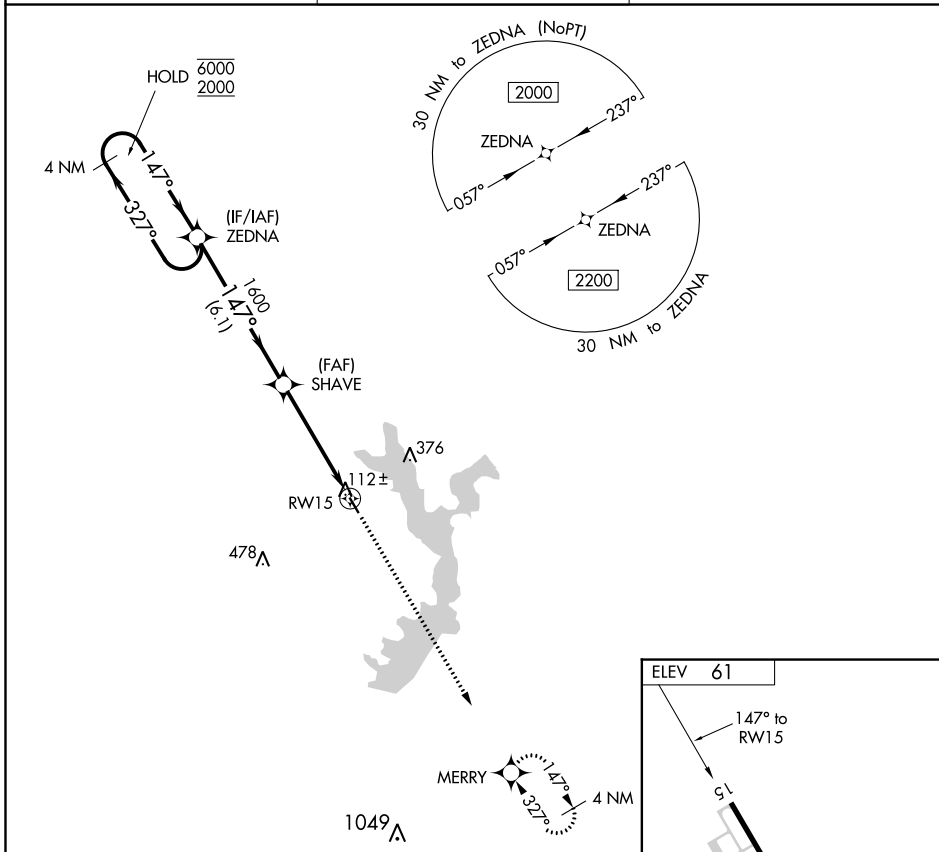
▼ Use Victoria altimeter setting; when not received, use Port Lavaca altimeter setting.
▲ NA

MISSED APPROACH: Climb to 2200 direct MERRY and hold.

VCT ASOS
119.025

HOUSTON CENTER
128.6 360.8

UNICOM
122.8 (CTAF) 0



CATEGORY	A	B	C	D
C CIRCLING	640-1	579 (600-1)	NA	NA

MIRL Rwy 15-33 0

SC-5, 19 MAY 2022 to 16 JUN 2022

SC-5, 19 MAY 2022 to 16 JUN 2022