

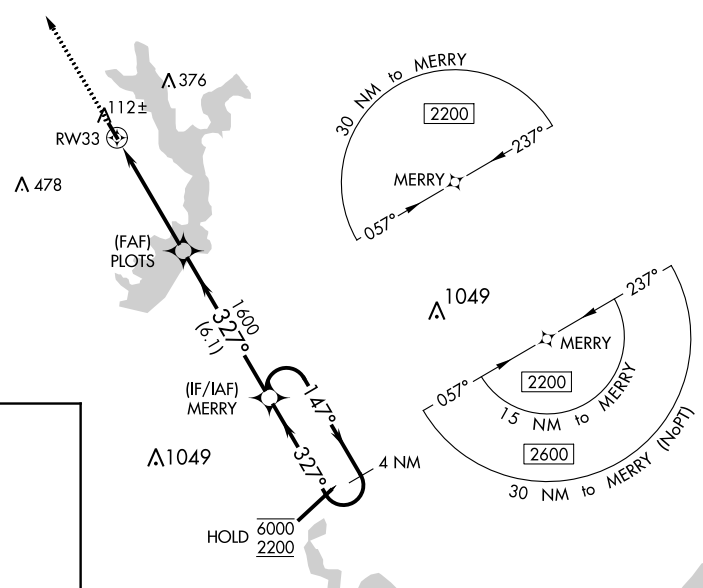
APP CRS <b>327°</b>	Rwy Idg TDZE Apt Elev	<b>N/A</b> <b>N/A</b> <b>61</b>
------------------------	-----------------------------	---------------------------------------

# RNAV (GPS)-B

JACKSON COUNTY (26R)

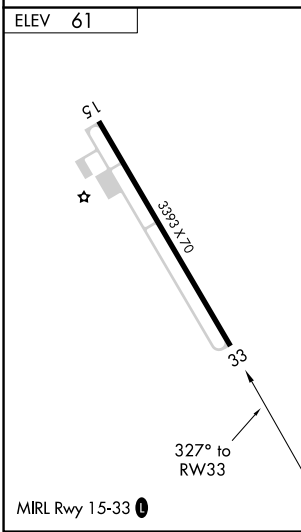
RNP APCH. ▼ Use Victoria altimeter setting; when not received, use Port Lavaca altimeter setting. ▲ NA	MISSED APPROACH: Climb to 2000 direct ZEDNA and hold.
--	---

VCT ASOS <b>119,025</b>	HOUSTON CENTER <b>128.6 360.8</b>	UNICOM <b>122.8 (CTAF) 0</b>
----------------------------	--------------------------------------	---------------------------------



SC-5, 19 MAY 2022 to 16 JUN 2022

SC-5, 19 MAY 2022 to 16 JUN 2022



2000	ZEDNA	MERRY	4 NM Holding Pattern
↑	✧		
PLOTS		147° → 6000	← 327° 2200
RW33	1600	327°	
TCH 40		3.00°	
4.7 NM	6.1 NM		
CATEGORY	A	B	C D
<b>C</b> CIRCLING	640-1	579 (600-1)	NA