

APP CRS <b>169°</b>	Rwy Idg <b>5799</b>
	TDZE <b>889</b>
	Apt Elev <b>892</b>

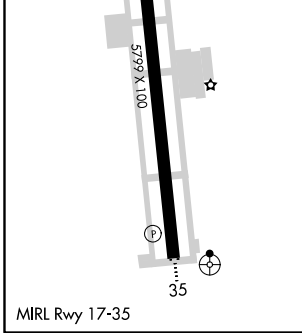
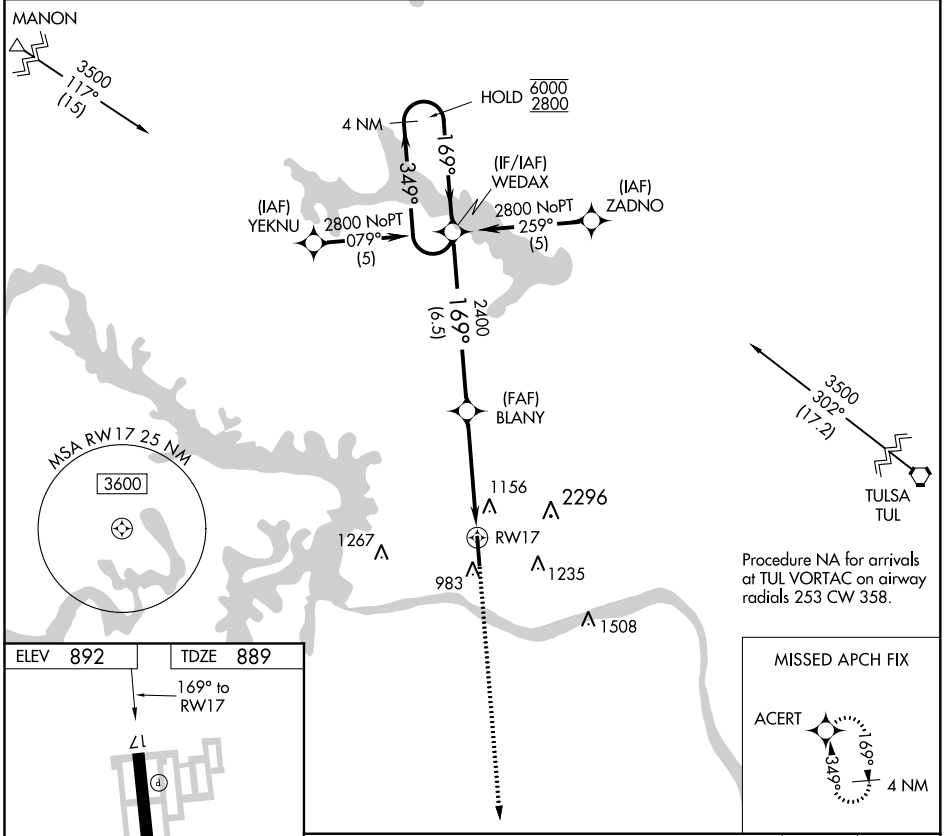
# RNAV (GPS) RWY 17

WILLIAM R POGUE MUNI (OWP)

RNP APCH. MISSED APPROACH: Climb to 2800 direct ACERT and hold.

▼ Rwy 17 helicopter visibility reduction below 1 SM NA. Procedure NA at night. Circling NA for Cat C east of Rwy 17-35.

AWOS-3PT <b>118.325</b>	TULSA APP CON <b>124.0 338.3</b>	UNICOM <b>122.7 (CTAF)</b>
----------------------------	-------------------------------------	-------------------------------



4 NM Holding Pattern WEDAX	VGSi and descent angles not coincident (VGSi Angle 3.00/TCH 31).		2800	ACERT
6000 ← 349°	2800	169° →	169°	4 NM
		769°	BLANY	
		2400	3.04° TCH 45	
		6.5 NM	4.6 NM	RWY 17
CATEGORY	A	B	C	D
LNAV MDA	1420-1	531 (600-1)	1420-1½ 531 (600-1½)	NA
<b>C</b> CIRCLING	1440-1	548 (600-1)	1440-1½ 548 (600-1½)	NA

SC-1, 19 MAY 2022 to 16 JUN 2022

SC-1, 19 MAY 2022 to 16 JUN 2022