

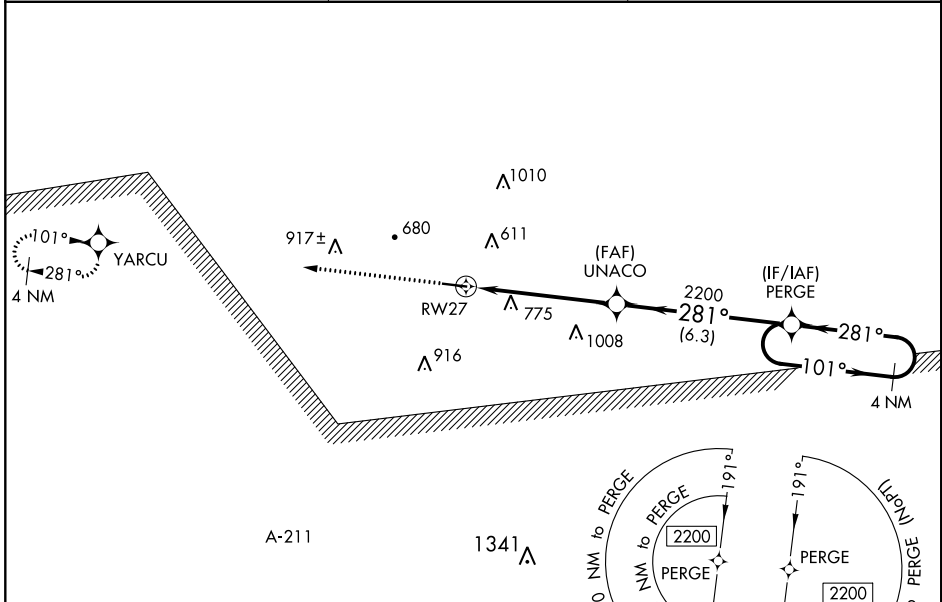
WAAS CH 82536 W27A	APP CRS 281°	Rwy Idg TDZE 435 Apt Elev 435	5010
--	------------------------	---	-------------

RNAV (GPS) RWY 27

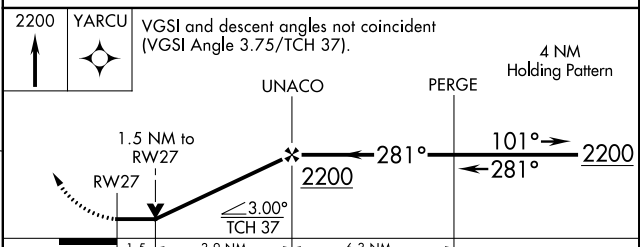
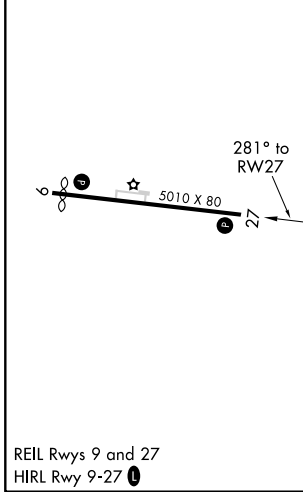
CLAYTON MUNI (11A)

RNP APCH.	<p>▽ VDP NA with Troy altimeter setting. When local altimeter setting not received, use Troy altimeter setting and increase all MDA's 80 feet; increase LP Cats C/D and Circling Cat D visibility ¼ SM and LNAV Cats C/D visibility ½ SM, increase Circling Cat C visibility ½ SM. Rwy 27 helicopter visibility reduction below ¾ SM NA.</p>	<p>MISSED APPROACH: Climb to 2200 direct YARCU and hold.</p>
-----------	---	---

AWOS-3 118.775	CAIRNS APP CON * 121.1 319.25	CTAF 122.90
--------------------------	---	-----------------------



ELEV 435	TDZE 435
-----------------	-----------------



CATEGORY	A	B	C	D
LP MDA	1060-1	625 (700-1)	1060-1¾	625 (700-1¾)
LNAV MDA	1080-1	645 (700-1)	1080-1⅞	645 (700-1⅞)
☐ CIRCLING	1100-1	665 (700-1)	1100-1¾ 665 (700-1¾)	1220-2½ 785 (800-2½)

SE-4, 19 MAY 2022 to 16 JUN 2022

SE-4, 19 MAY 2022 to 16 JUN 2022