

WAAS CH <b>53436</b> <b>W09A</b>	APP CRS <b>101°</b>	Rwy Idg <b>4732</b> TDZE <b>434</b> Apt Elev <b>435</b>
--	------------------------	---

# RNAV (GPS) RWY 9

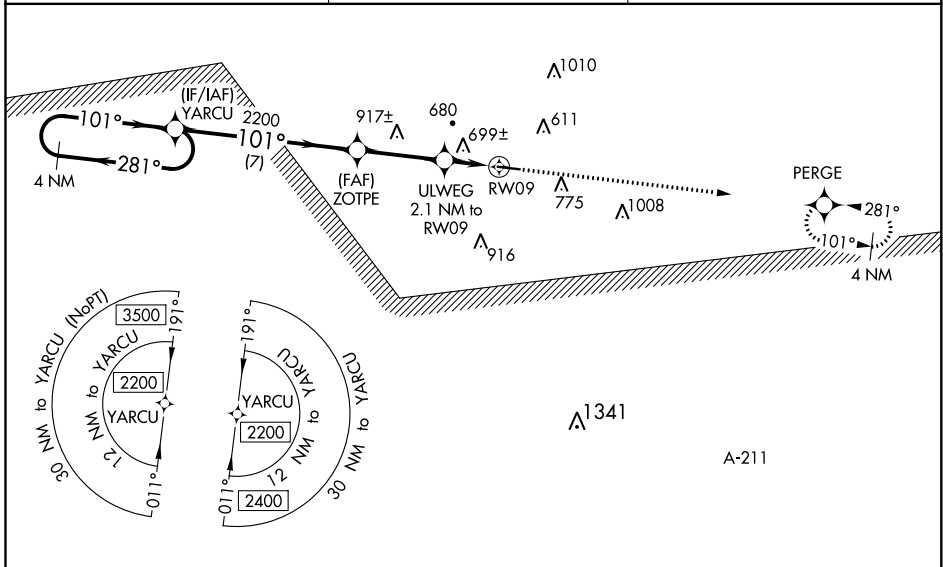
CLAYTON MUNI (11A)

RNP APCH.

**▽** For uncompensated Baro-VNAV systems, LNAV/VNAV NA below -16°C or above 54°C.  
**△ NA** When local altimeter setting not received, use Troy altimeter setting: increase LPV DA to 793, increase LNAV/VNAV DA to 1118 and all Cats visibility ¼ SM; increase all MDAs 80 feet and visibility LNAV Cats C and D ½ SM and Circling Cats C and D ½ SM. Rwy 9 helicopter visibility reduction below ¾ SM NA. Baro-VNAV and VDP NA when using Troy altimeter setting.

**MISSED APPROACH:**  
Climb to 2200 direct PERGE and hold.

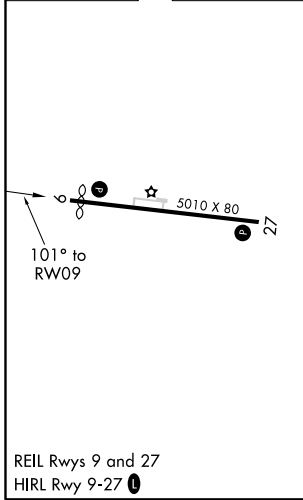
AWOS-3 <b>118.775</b>	CAIRNS APP CON ★ <b>121.1 319.25</b>	CTAF <b>122.90</b>
--------------------------	---	-----------------------



SE-4, 19 MAY 2022 to 16 JUN 2022

SE-4, 19 MAY 2022 to 16 JUN 2022

ELEV <b>435</b>	TDZE <b>434</b>
-----------------	-----------------



VGSI and RNAV glidepath not coincident (VGSI Angle 3.20/TCH 30).				2200 	PERGE 
4 NM Holding Pattern YARCU				*LNAV only.	
2200 ← 281° → 101° → 2200				*1120	
GP 3.00° TCH 40				7 NM    3.4 NM    0.6    1.5	
CATEGORY	A	B	C	D	
LPV DA	725-1		291 (300-1)		
LNAV/VNAV DA	1050-2½		616 (700-2½)		
LNAV MDA	960-1	526 (600-1)	960-1½	526 (600-1½)	
<b>C</b> CIRCLING	1100-1	665 (700-1)	1100-1¾ 665 (700-1¾)	1220-2½ 785 (800-2½)	