

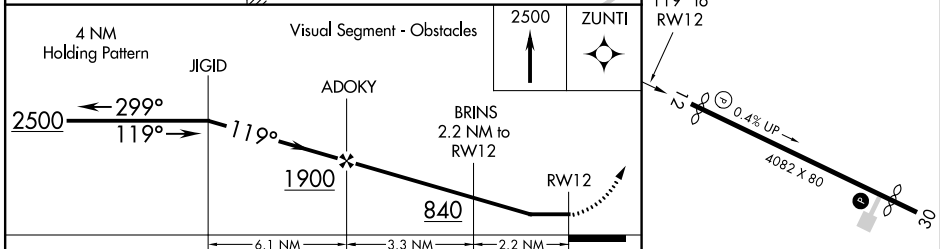
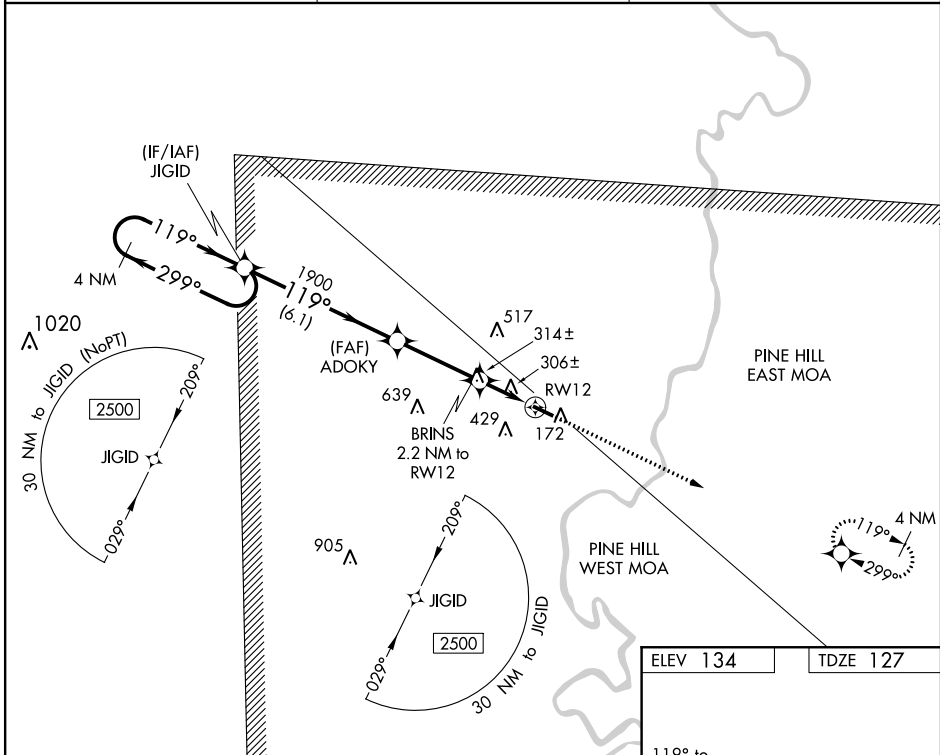
WAAS CH <b>70638</b> W12A	APP CRS <b>119°</b>	Rwy Idg TDZE <b>127</b> Apt Elev <b>134</b>	<b>3913</b>
---------------------------------	------------------------	---	-------------

# RNAV (GPS) RWY 12

BUTLER/CHOCTAW COUNTY (Ø9A)

<p><b>⚠</b> NA DME/DME RNP-0.3 NA. Helicopter visibility reduction below 1 SM NA. Use Demopolis altimeter setting; when not received, use Key Fld altimeter setting and increase all MDA 60 feet and increase all Cat C visibility ¼ mile. Procedure NA at night.</p>	<p>MISSED APPROACH: Climb to 2500 direct ZUNTI and hold.</p>
---	--

DYA AWOS-3P <b>119.475</b>	MERIDIAN APP CON ★ <b>119.2 348.7</b>	UNICOM <b>122.8 (CTAF) 0</b>
-------------------------------	--	---------------------------------



CATEGORY	A	B	C	D
LP MDA	620-1	493 (500-1)	620-1 <sup>3</sup> / <sub>8</sub> 493 (500-1 <sup>3</sup> / <sub>8</sub> )	NA
LNAV MDA	640-1	513 (600-1)	640-1 <sup>3</sup> / <sub>8</sub> 513 (600-1 <sup>3</sup> / <sub>8</sub> )	NA
<b>C</b> CIRCLING	680-1 546 (600-1)	800-1 666 (700-1)	800-1 <sup>3</sup> / <sub>4</sub> 666 (700-1 <sup>3</sup> / <sub>4</sub> )	NA

ELEV 134	TDZE 127
----------	----------

Diagram of RWY 12 showing a 0.4% up-slope and a length of 4082 x 80 feet. The diagram also shows the 119° heading to RW12 and the ZUNTI missed approach point.

SE-4, 19 MAY 2022 to 16 JUN 2022

SE-4, 19 MAY 2022 to 16 JUN 2022