

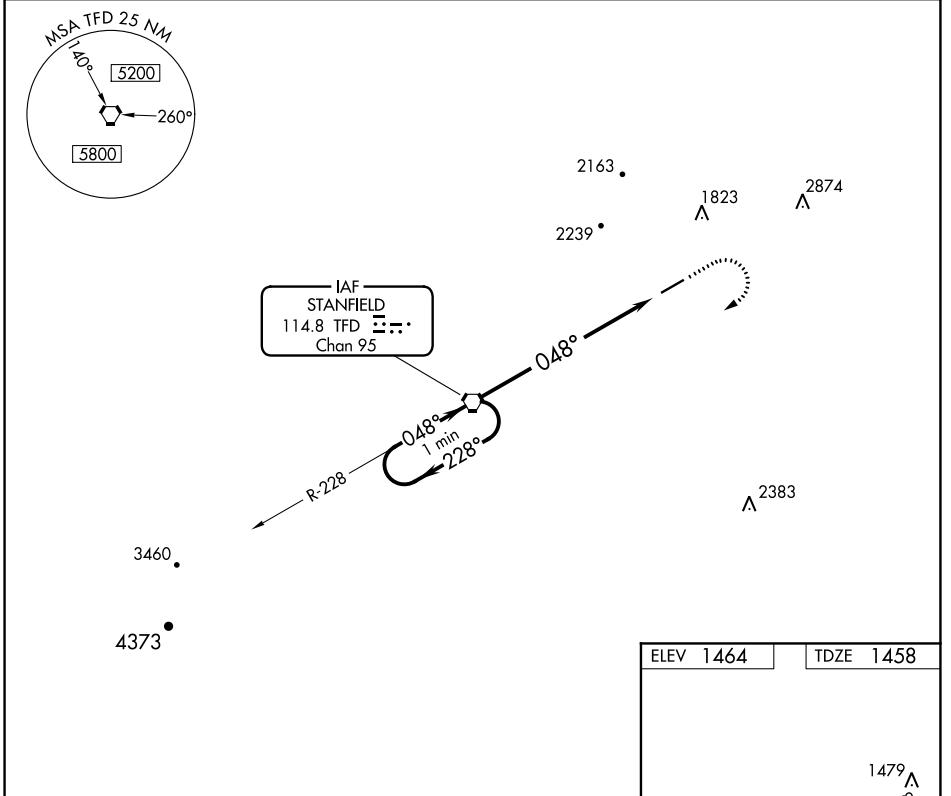
VORTAC TFD 114.8 Chan 95	APP CRS 048°	Rwy Idg 5200 TDZE 1458 Apt Elev 1464
--	------------------------	---

VOR RWY 5

CASA GRANDE MUNI (CGZ)

<p>▽ For inop ALS, increase S-5 Cats A/B visibility to 1 mile. Rwy 5 helicopter visibility reduction below 3/4 SM NA. Circling Rwy 23 NA at night.</p>	<p>MALSR</p>	<p>MISSED APPROACH: Climb to 2200, then climbing right turn to 3500 direct TFD VORTAC and hold.</p>
---	---------------------	--

AWOS-3PT 132.175	ALBUQUERQUE CENTER 125.4 269.3	UNICOM 122.7 (CTAF)
----------------------------	--	-------------------------------



SW-4, 19 MAY 2022 to 16 JUN 2022

SW-4, 19 MAY 2022 to 16 JUN 2022

ELEV 1464	TDZE 1458
-----------	-----------

MIRL Rwy 5-23
FAF to MAP 7.8 NM
Knots: 60 90 120 150 180
Min:Sec: 7:48 5:12 3:54 3:07 2:36

One Minute Holding Pattern	3500	← 228°	→ 048°	TFD VORTAC	2200	3500	TFD
					TFD 6.4	TFD 7.8	
				6.4 NM	1.4		
CATEGORY	A	B	C	D			
S-5	1960-3/4	502 (500-3/4)	NA	NA			
CIRCLING	1960-1	496 (500-1)	NA	NA			