

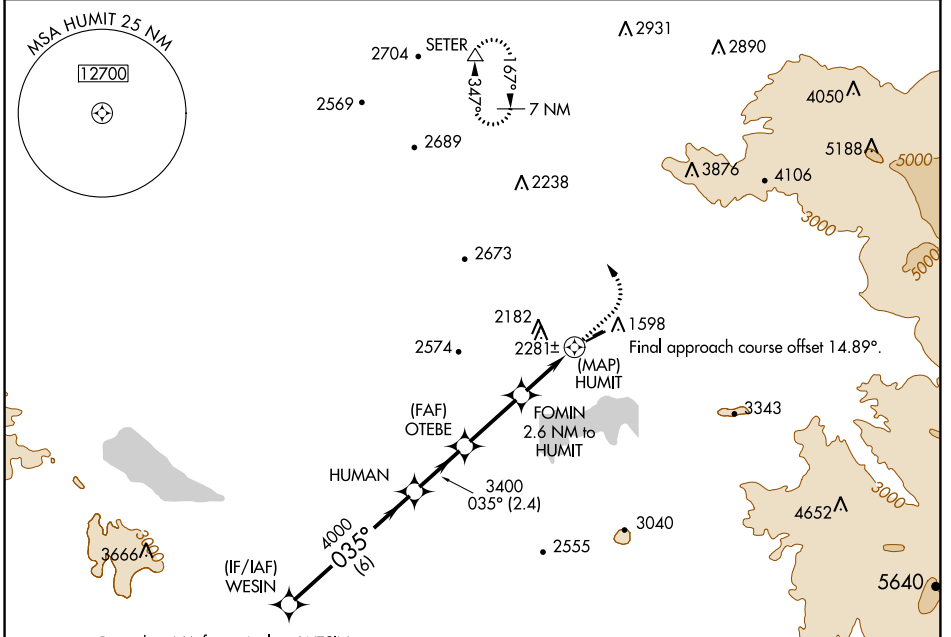
APP CRS 035°	Rwy Idg 4315
	TDZE 1513
	Apt Elev 1515

RNAV (GPS) RWY 5

HEMET-RYAN (HMT)

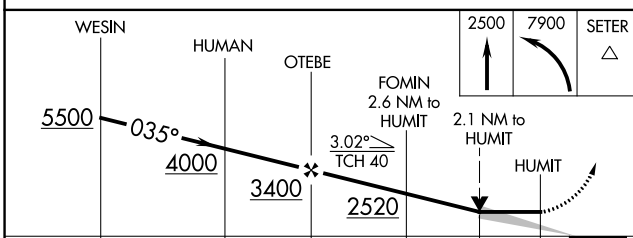
RNP APCH ⚠	MISSED APPROACH: Climb to 2500 then climbing left turn to 7900 direct SETER and hold, continue climb-in-hold to 7900.
---------------	---

AWOS-3PT 118.375	MARCH APP CON * 133.5 306.975	UNICOM 123.0 (CTAF)
----------------------------	---	-------------------------------



Procedure NA for arrivals at WESIN on V186 southeast bound.

ELEV 1515	TDZE 1513
-----------	-----------



Rwy 4-22 restricted for glider operations.

MRL Rwy 5-23

CATEGORY	A	B	C	D
LNVA MDA	2360-1 847 (900-1)	2360-1¼ 847 (900-1¼)	2360-2½ 847 (900-2½)	NA
CIRCLING	2620-1¼ 1105 (1200-1¼)	2620-1½ 1105 (1200-1½)	2880-3 1365 (1400-3)	NA

SW-3, 19 MAY 2022 to 16 JUN 2022

SW-3, 19 MAY 2022 to 16 JUN 2022