

| | | |
|-------------|----------|-------------|
| APP CRS | Rwy Idg | 7000 |
| 259° | TDZE | 5537 |
| | Apt Elev | 5537 |

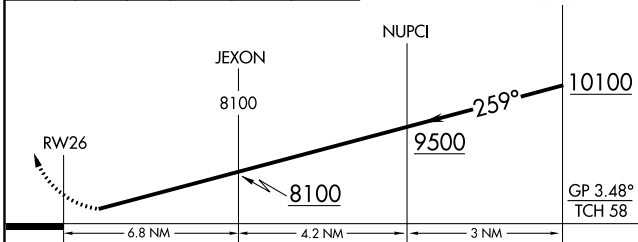
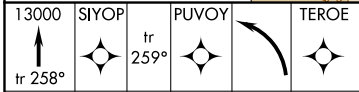
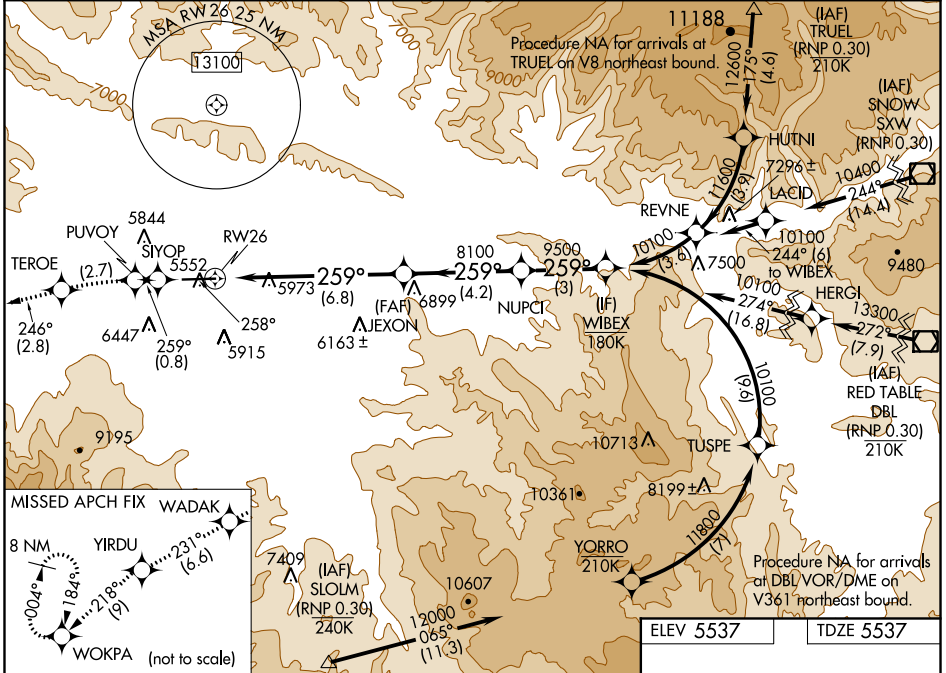
RNAV (RNP) Z RWY 26

RIFLE GARFIELD COUNTY (RIL)

When VGSJ inoperative, procedure NA at night. RF required. GPS required. Missed approach requires RNP less than 1.0. For uncompensated Baro-VNAV systems, procedure NA below -24°C (-11°F) or above 38°C (100°F). * Missed approach requires minimum climb of 398 feet per NM to 9100.

MISSED APPROACH: Climb to 13000 on track 258° to SIYOP and track 259° to PUVOY left turn to TEROE and track 246° to WADAK and track 231° to YIRDU and track 218° to WOKPA and hold, continue climb-in-hold to 13000.

| | | |
|------------------------|--|-------------------------------|
| ASOS 135.275 | DENVER CENTER 134.95 327.075 | UNICOM 122.8 (CTAF) |
|------------------------|--|-------------------------------|



| | |
|-----------|-----------|
| ELEV 5537 | TDZE 5537 |
|-----------|-----------|

| CATEGORY | A | B | C | D |
|--------------|---------|--------------|---|----|
| RNP 0.10 DA* | 5955-1 | 418 (500-1) | | NA |
| RNP 0.30 DA | 6387-2½ | 850 (900-2½) | | NA |

AUTHORIZATION REQUIRED

HIRL Rwy 8-26
REIL Rws 8 and 26

SW-1, 19 MAY 2022 to 16 JUN 2022

SW-1, 19 MAY 2022 to 16 JUN 2022