

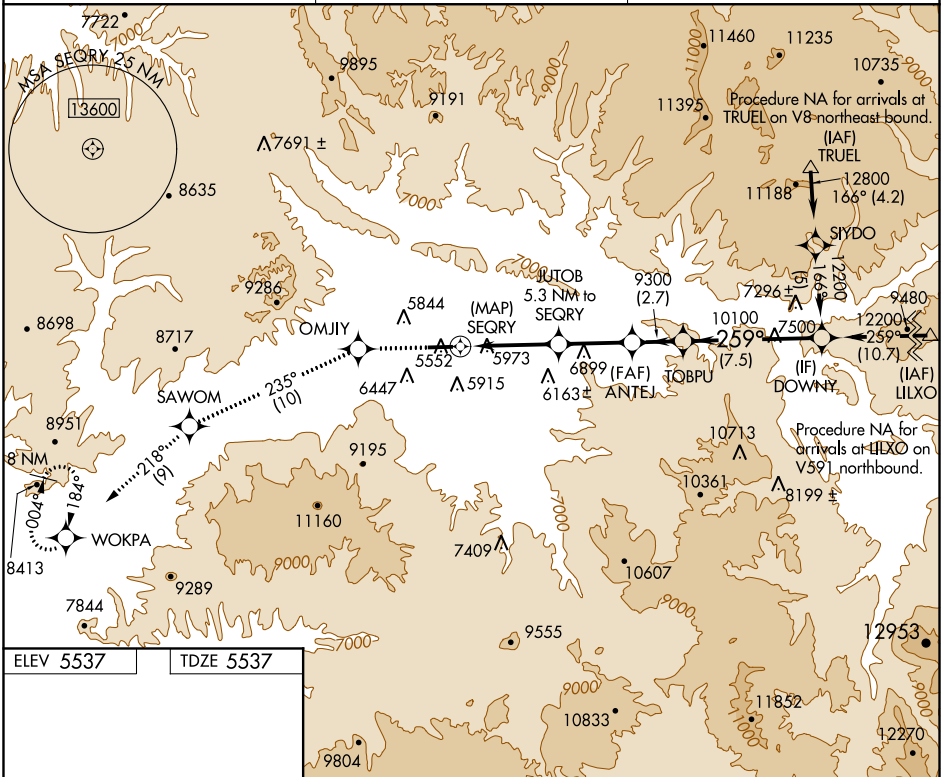
APP CRS	Rwy Idg	7000
259°	TDZE	5537
	Apt Elev	5537

RNAV (GPS) W RWY 26

RIFLE GARFIELD COUNTY (R.I.L.)

	DME/DME RNP-0.3 NA. Visibility reduction by helicopters NA. Circling NA south of Rwy 8-26 at night. Inoperative table does not apply.		MISSED APPROACH: Climb to 13000 direct OMJY and on track 235° to SAWOM and on track 218° to WOKPA and hold, continue climb-in-hold to 13000.
--	---	--	--

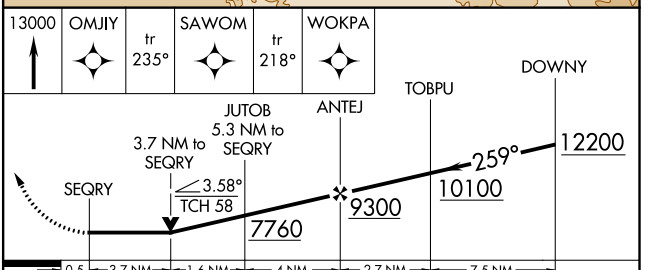
ASOS 135.275	DENVER CENTER 134.95 327.075	UNICOM 122.8 (CTAF)
------------------------	--	-------------------------------



ELEV 5537	TDZE 5537
-----------	-----------

HIRL Rwy 8-26

REIL Rwy 8 and 26



CATEGORY	A	B	C	D
LNAV MDA	7180-1¼ 1643 (1700-1¼)	7180-1½ 1643 (1700-1½)	7180-3 1643 (1700-3)	NA
CIRCLING	7180-1¼ 1643 (1700-1¼)	7180-1½ 1643 (1700-1½)	7180-3 1643 (1700-3)	NA

SW-1, 19 MAY 2022 to 16 JUN 2022

SW-1, 19 MAY 2022 to 16 JUN 2022