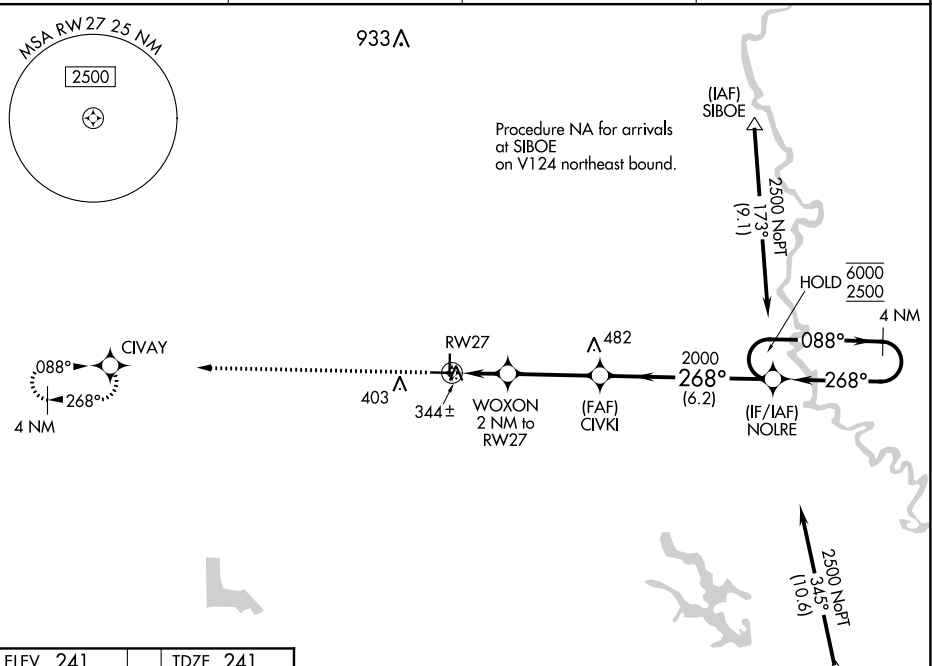


APP CRS	Rwy Idg	<b>4501</b>
<b>268°</b>	TDZE	<b>241</b>
	Apt Elev	<b>241</b>

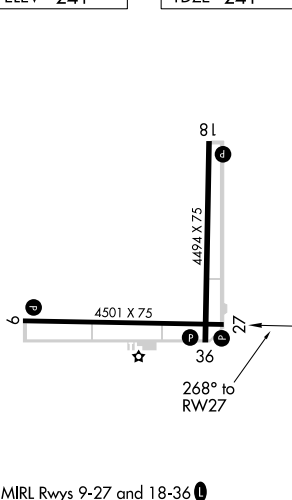
# RNAV (GPS) RWY 27

CARLISLE MUNI (4M3)

RNP APCH.		MISSED APPROACH: Climb to 2500 direct CIVAY and hold.	
Procedure NA at night. Rwy 27 helicopter visibility reduction below 1 SM NA.			
AWOS-2	LITTLE ROCK APP CON	CLNC DEL	UNICOM
<b>119.275</b>	<b>135.4 353.6</b>	<b>135.4</b>	<b>122.8 (CTAF)</b>



ELEV 241	TDZE 241
----------	----------



2500	CIVAY	NOLRE 4 NM Holding Pattern	
↑	✧	WOXON 2 NM to RWY 27	CIVKI
		2.98° TCH 47	268°
		920	2000
		2 NM	3.3 NM
			6.2 NM
CATEGORY	A	B	C
LNAV MDA	640-1	399 (400-1)	NA

SC-1, 19 MAY 2022 to 16 JUN 2022

SC-1, 19 MAY 2022 to 16 JUN 2022