

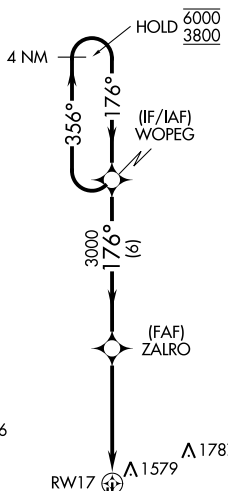
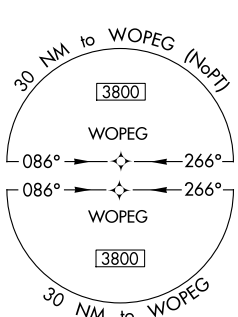
APP CRS CH 45643 W17A	APP CRS 176°	Rwy Idg TDZE 1420 Apt Elev 1420	5600
---	------------------------	---	-------------

RNAV (GPS) RWY 17

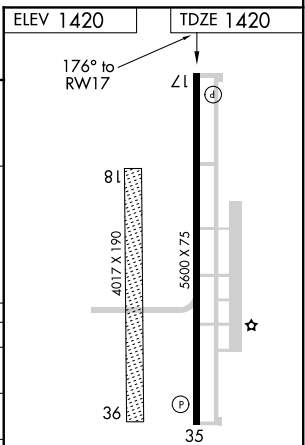
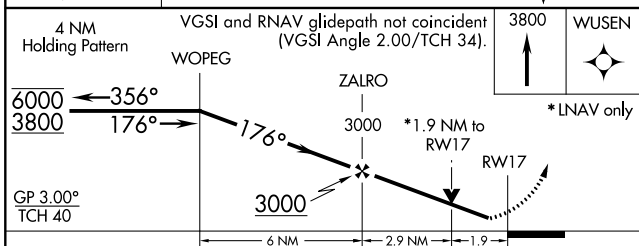
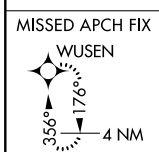
EL RENO RGNL (RQO)

RNP APCH.	<p>▼ Circling NA to Rwy 18 and 36. Circling Rwy 35 NA at night. ▲ Rwy 17 helicopter visibility reduction below ¾ SM NA. For uncompensated Baro-VNAV systems, LNAV/VNAV NA below -17°C or above 54°C.</p>	MISSED APPROACH: Climb to 3800 direct WUSEN and hold.
-----------	---	---

AWOS-3 118.475	OKE CITY APP CON 124.6 266.8	UNICOM 122.8 (CTAF) 0
--------------------------	--	---------------------------------



A 2283



CATEGORY	A	B	C	D
LPV DA	1670-¾ 250 (300-¾)			
LNAV/VNAV DA	1754-1 334 (400-1)			
LNAV MDA	1860-1 440 (500-1)	1860-1¼ 440 (500-1¼)		
C CIRCLING	1900-1 480 (500-1)	2140-2 720 (800-2)	2140-2¼ 720 (800-2¼)	

MIRL Rwy 17-35 0
REIL Rwy 17 and 35 0

SC-1, 19 MAY 2022 to 16 JUN 2022

SC-1, 19 MAY 2022 to 16 JUN 2022