

WAAS CH <b>99344</b> <b>W01A</b>	APP CRS <b>013°</b>	Rwy Idg TDZE <b>86</b> Apt Elev <b>86</b>	<b>5398</b>
--	------------------------	---	-------------

# RNAV (GPS) RWY 1

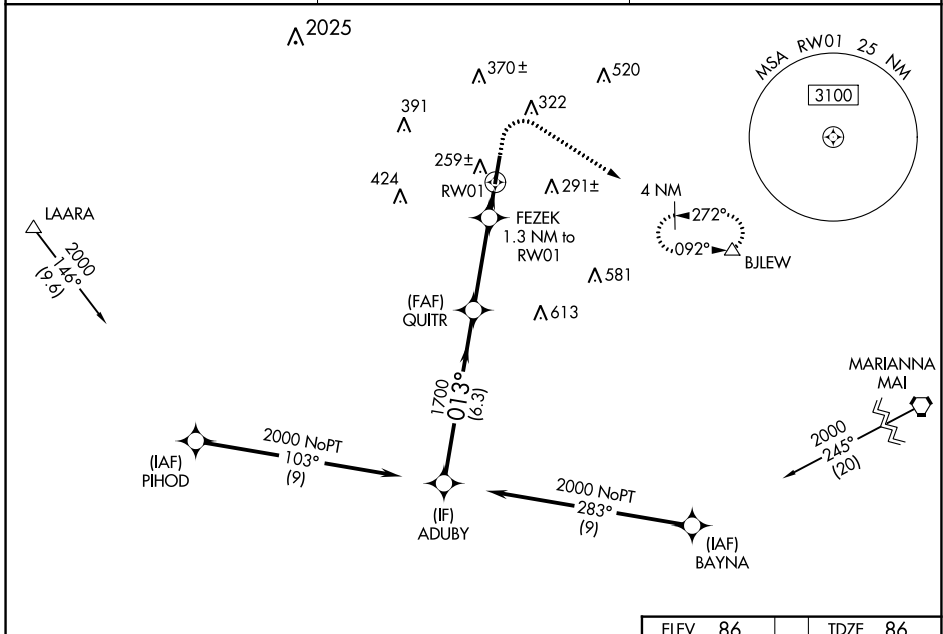
TRI-COUNTY (BCR)

RNP APCH - GPS.

**⚠** Helicopter visibility reduction below  $\frac{3}{4}$  SM NA. Baro-VNAV NA when using Marianna altimeter setting. Circling Rwy 19 NA at night. When local altimeter setting not received, use Marianna altimeter setting: increase LPV DA to 468 and LNAV/VNAV DA to 573 and all visibilities  $\frac{1}{8}$  SM; increase all MDAs 60 feet and visibility Cat C  $\frac{1}{4}$  SM.

**MISSED APPROACH:** Climb to 700 then climbing right turn to 2000 direct BJLEW and hold.

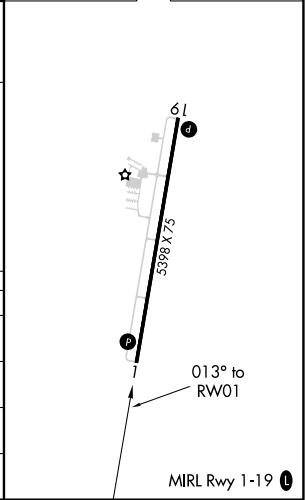
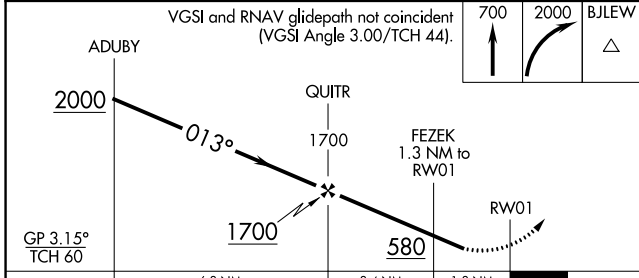
AWOS-3PT <b>119.825</b>	CAIRNS APP CON ★ <b>133.75 270.35</b>	UNICOM <b>122.725 (CTAF) 0</b>
----------------------------	--	-----------------------------------



SE-3, 19 MAY 2022 to 16 JUN 2022

SE-3, 19 MAY 2022 to 16 JUN 2022

ELEV	86	TDZE	86
------	----	------	----



CATEGORY	A	B	C	D
LPV DA	415-1	329 (400-1)		NA
LNAV/VNAV DA	520-1¼	434 (500-1¼)		NA
LNAV MDA	520-1	434 (500-1)	520-1¼ 434 (500-1¼)	NA
<b>C</b> CIRCLING	580-1 494 (500-1)	600-1 514 (600-1)	680-1½ 594 (600-1½)	NA