

(BEAVY5.BEAVY) 19003

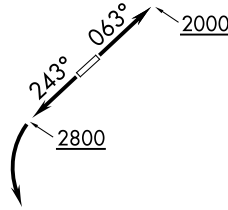
AL-6894 (FAA)

LINCOLN-TON-LINCOLN COUNTY RGNL (IPJ)
LINCOLN-TON, NORTH CAROLINA

BEAVY FIVE DEPARTURE (RNAV)

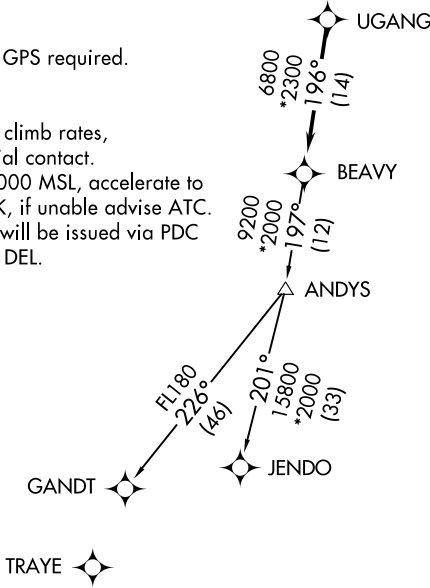
AWOS-3
119.675
CLNC DEL (GCO)
124.9
UNICOM (CTAF)
123.05
CHARLOTTE DEP CON
134.75 257.2

**TOP ALTITUDE:
3000**



TAKEOFF MINIMUMS
Rwys 5, 23: Standard.

- NOTE: For turbojets only.
- NOTE: DME/DME/IRU or GPS required.
- NOTE: RNAV 1.
- NOTE: RADAR required.
- NOTE: If unable to accept climb rates, advise ATC on initial contact.
- NOTE: Upon reaching 10000 MSL, accelerate to and maintain 280K, if unable advise ATC.
- NOTE: Transponder code will be issued via PDC or Charlotte CLNC DEL.



NOTE: Chart not to scale.

DEPARTURE ROUTE DESCRIPTION

TAKEOFF RWY 5: Climb heading 063° to 2000 before proceeding on course.

TAKEOFF RWY 23: Climb heading 243° to 2800 before turning left.

Climb on heading assigned by ATC, expect RADAR vectors to UGANG, then on track 196° to BEAVY. Then on assigned transition. Maintain 3000, expect clearance to filed altitude within 10 minutes after departure.

GANDT TRANSITION (BEAVY5.GANDT)

JENDO TRANSITION (BEAVY5.JENDO)

BEAVY FIVE DEPARTURE (RNAV)

(BEAVY5.BEAVY) 03JAN19

LINCOLN-TON, NORTH CAROLINA
LINCOLN-TON-LINCOLN COUNTY RGNL (IPJ)

SE-2, 19 MAY 2022 to 16 JUN 2022

SE-2, 19 MAY 2022 to 16 JUN 2022